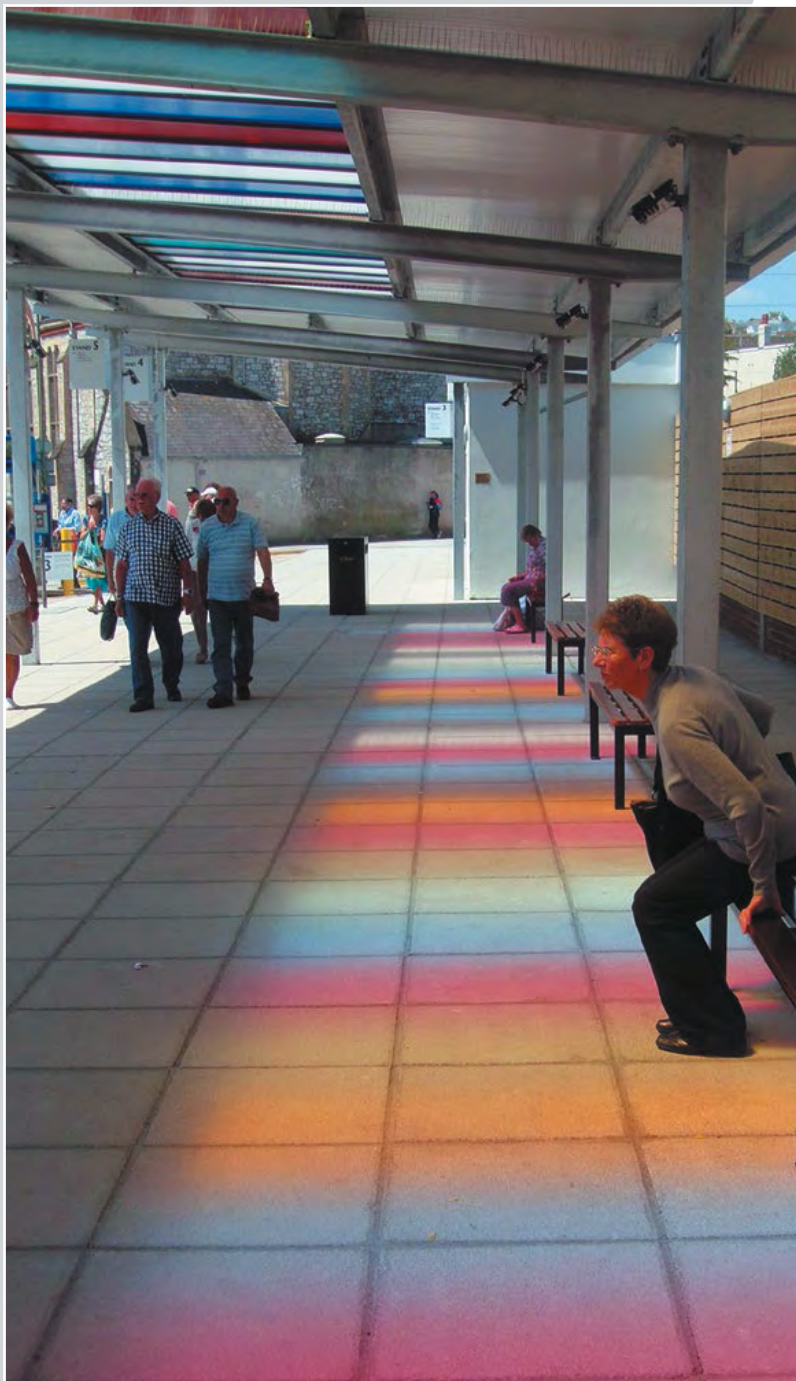




**Rockwell**  
GLAZING SOLUTIONS

## **SYSTEM 655**

Multiwall Polycarbonate Roofing System



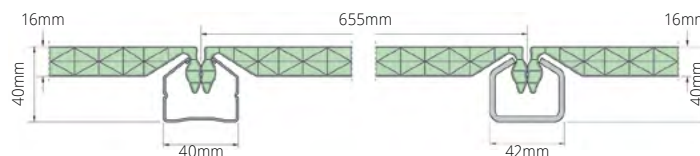
## Simple / Safe / Stylish

A versatile multiwall polycarbonate glazing system offering high strength and insulation combined with streamline aesthetics.

Ideally suited to canopy and walkway coverings, as well as roof light and north light glazing. System 655/16 combines a range of design advantages for the architect, contractor and end user.

Available from our UK stock in a range of standard and attractive translucent sheet colours, with system glazing channels and perimeter profiles supplied powder coated to suit, both new build and refurbished canopy and walkway structures can now utilise a range of coloured sheet to closely match corporate identities, or to simply add a touch of much needed vibrancy.

Cost effective and extremely quick to fit, System 655/16 has a multitude of uses for roofing and glazing... and a colour for everyone.



## Technical support

Technical advice, samples and drawing assistance is available for designers, contractors, building managers and end users with cost information provided swiftly to help at all stages of construction.

Full system datasheets, installation guides, typical CAD drawings and project examples are all available to view at our website [www.rockwellsheet.com](http://www.rockwellsheet.com)





## System benefits

- A fully impact resistant, Class B 'non-fragile' roofing system.
- Provides areas of safe shading by filtering 98% of harmful UV rays.
- Choice of standard clear and opal or 8 attractive translucent sheet colours.
- Glazing bars and perimeter profiles supplied powder coated to any standard BS or RAL colour.
- Minimum of system components for quick, simple and secure fixing.
- Sheets and glazing channels available in lengths of 8mtr+.
- Fire Resistant: Polycarbonate sheets rated B s1 d0 to BS EN13501-1 (equivalent to a UK Class 0).
- Energy Saving: thermal transmittance (U-Value) of 2.2W/m2K.
- Lightweight - full system between 3.8Kg/m2 & 6.5Kg/m2.
- Cost effective - System 655/16 costs no more than traditional polycarbonate sheet/bar systems.
- Available from stock or manufactured to length to avoid waste.
- All sheets now supplied with thermo sealed sheet edges for extra security against ingress of water, algae and insects.
- Fully recyclable components with minimal environmental impact.
- Manufactured to UNI EN ISO 9001:2008 quality standard.
- System variations also available for vertical glazing and barrel vault applications.



### Excellent impact strength

To assist compliance with CDM/HSE regulations, System 655/16 was independently tested by BRE to ACR(M)001:2005. When utilising 3mm thick glazing channels over single or multiple spans of 3mtr or less, System 655/16 is certified as a Class B non-fragile roofing assembly.







Image courtesy of Sheffield Design & Project Management Architects

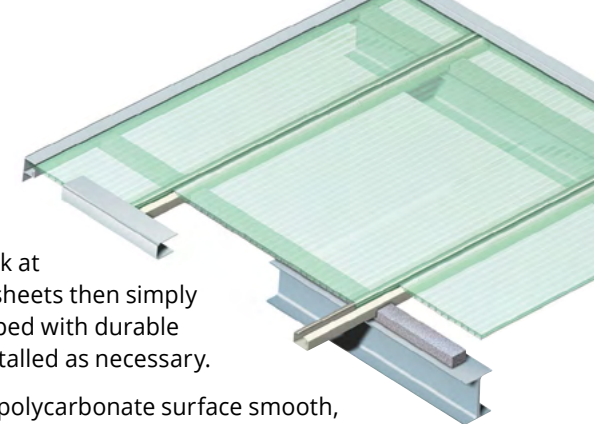
## Quick installation

With the minimum number of components, System 655/16 is extremely quick to install.

System glazing channels are secured to supporting framework at 655mm centres with the unique 'hooked edge' of the 655/16 sheets then simply snapped down into place. The perimeter of the glazing is capped with durable anodised aluminium finishing profiles with PE foam inlays installed as necessary.

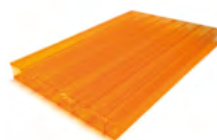
This unique 'lock in' modular design of the system leaves the polycarbonate surface smooth, free from unsightly protruding glazing bar up stands and mechanical fixings, making it easy to flash against walls or cap on ridges and hips.

A further advantage System 655/16 can offer having each sheet and glazing channel supplied at the exact length required - further reducing the installation time.



## Connecting you with colour

System 655 Polycarbonate sheets are available from stock in the following sheet finishes with glazing channels and perimeter profiles supplied powder coated to any BS or RAL colour.



Amber



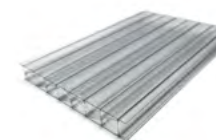
Cherry Red



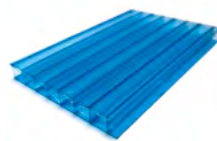
Clear



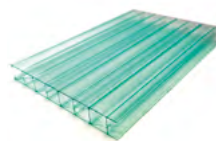
Fuchsia Pink



Graphite Grey



Pacific Blue



Sea Grass Green



Opal



Sunburst Yellow



Violet



Image courtesy of Setter Play



Image courtesy of Langley Design



Image courtesy of Theories Landscapes



Image courtesy of Fabels Creative



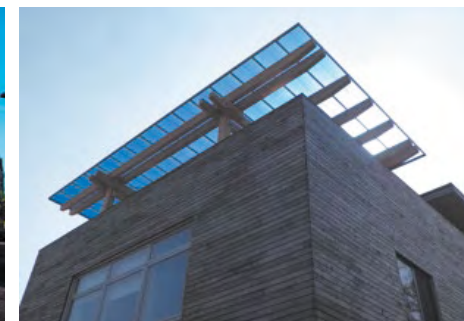
Image courtesy of White Design Architects

## Technical specification

Sheet Module width, thickness and structure	655mm wide (+/- 5mm) x 16mm thick 'X' structure multiwall polycarbonate sheet with hooked sheet edges and factory sealed ends
Standard sheet finishes	Clear or translucent opal sheet finish with satinised surface texture. Available from stock in 2.5mtr, 3mtr, 4mtr, 5.05mtr, 6.05mtr and 8.05mtr lengths - or supplied manufactured to length without quantity restriction.
Coloured sheet finishes	Pacific blue, cherry red, violet, sea grass green, amber, fuchsia pink, graphite grey and sunburst yellow translucent sheet finishes with satinised surface texture. Available from stock in 2.5mtr, 3mtr, 4mtr, 5.05mtr, 6.05mtr, 8.05mtr and 9.05mtr lengths - or supplied manufactured to length (min 75m2) in c.4wks from order.
Steel glazing channel size/weight	40 x 34 x 1mm thick x made to length or 4m, 5m, 6m ex. stock - 0.88 Kg/m 42 x 34 x 3mm thick x made to length or 4m, 5m, 6m, 7m, 8m ex. stock - 2.65 Kg/m
Glazing channel finish	1mm thick - plastic coated in grey white (RAL 9002) 3mm thick - powder coated to any standard RAL or BS colour
Impact resistance	High impact resistance achieved with tests simulating hail and falling objects
Average system weight using	1mm channels - c.3.8Kg/m2    3mm channels - c.6.5Kg/m2
Perimeter profile type/finish	Anodized silver aluminium or PPC in 6m stock lengths, average weight c.1.0Kg/m
Thermal transmittance (Sheet)	U-Value: 2.2 W/m2K
Noise reduction	20dB (DIN 52210-75 Rw)
Non-fragility rating	Class 'B' to ACR(M)001:2005 (with 3mm channels supported at max. 3.0m centres)
Light transmission	Clear: 60% +/- 2% Opal: 41% +/- 2%
Solar factor (G value)	Clear: 69% Opal: 55%
Minimum recommended pitch	5°
Working temperature range	-40°C to +130°C
Fire classification	Euroclass - EN13501-1 2006 B-s1, d0 (as UK Class 0)
System extras available	Mill finish or PPC aluminium ridge and hip cappings
Warranty period	10 year limited warranty covering discolouration and hailstone damage



Image courtesy of Langley Design











**Rockwell**  
GLAZING SOLUTIONS

A comprehensive range of dwg files relating to  
to this system are available to download at  
**[www.rockwellsheet.com](http://www.rockwellsheet.com)**

**Rockwell Sheet Sales Ltd**

Rockwell House  
Birmingham Road  
Millisons Wood  
Coventry, CV5 9AZ

Tel: 024 7601 7013  
Fax: 01676 523630  
Email: [info@rockwellsheet.com](mailto:info@rockwellsheet.com)  
[www.rockwellsheet.com](http://www.rockwellsheet.com)