



# PANELPIU 500/16-20-25 (MODULE 500/16-20-25)

Rockwell Sheet Sales Limited  
Rockwell House  
Birmingham Road  
Millisons Wood  
Coventry. CV5 9AZ

Tel: 01676 523386  
@; info@rockwellsheet.com  
www.rockwellsheet.com

# INDEX

PANELIU' 500/16-20-25 SHEET CROSS SECTION Pg.3

## ACCESSORIES

ALUMINIUM PROFILES \_\_\_\_\_ Pg.4

OTHER ACCESSORIES \_\_\_\_\_ Pg.4

TECHNICAL NOTES OF USE AND MAINTENANCE Pg.5-6

## APPLICATIONS

FIELD OF APPLICATION \_\_\_\_\_ Pg.7

APPLICATIONS – VERTICAL CROSS SECTION \_\_\_\_\_ Pg.8-9

APPLICATIONS – HORIZONTAL CROSS SECTION \_\_\_\_\_ Pg.10

CONNECTION BETWEEN PROFILES \_\_\_\_\_ Pg.11

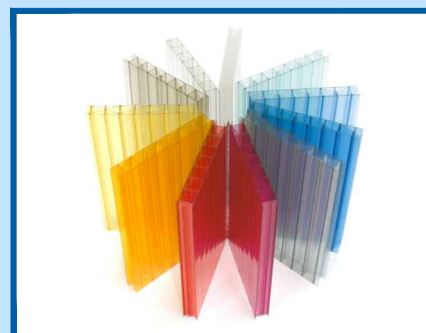
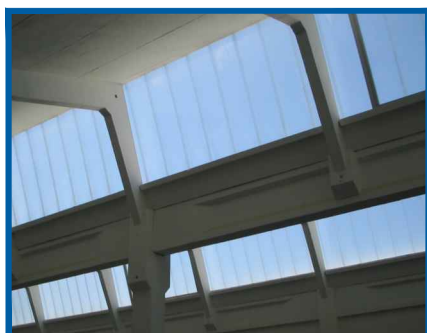
CORNER PROFILE AND EXPANSION JOINTS \_\_\_\_\_ Pg.12

## FITTING GUIDE

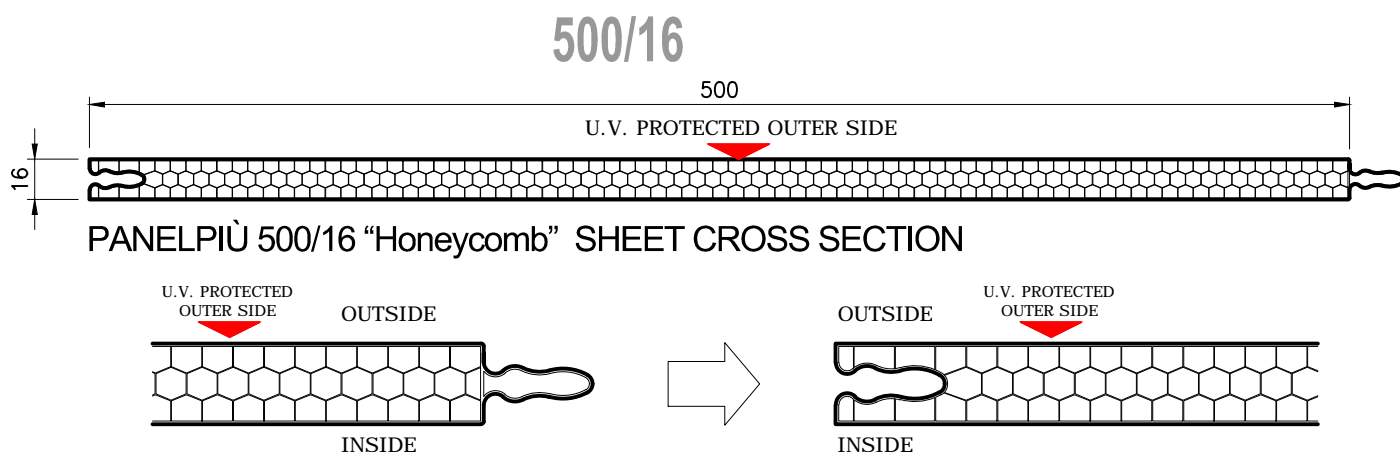
FITTING GUIDE FOR FIXED

VERTICAL GLAZING AND NORTHLIGHT \_\_\_\_\_ Pg.13-14-15-16

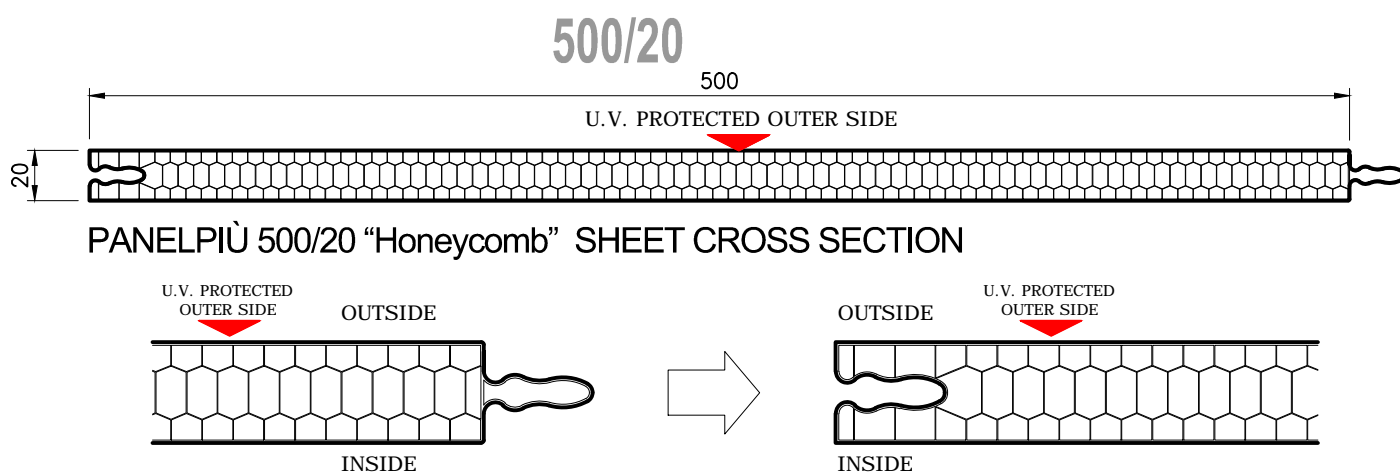
FITTING GUIDE FOR OPENING SECTION \_\_\_\_\_ Pg.17



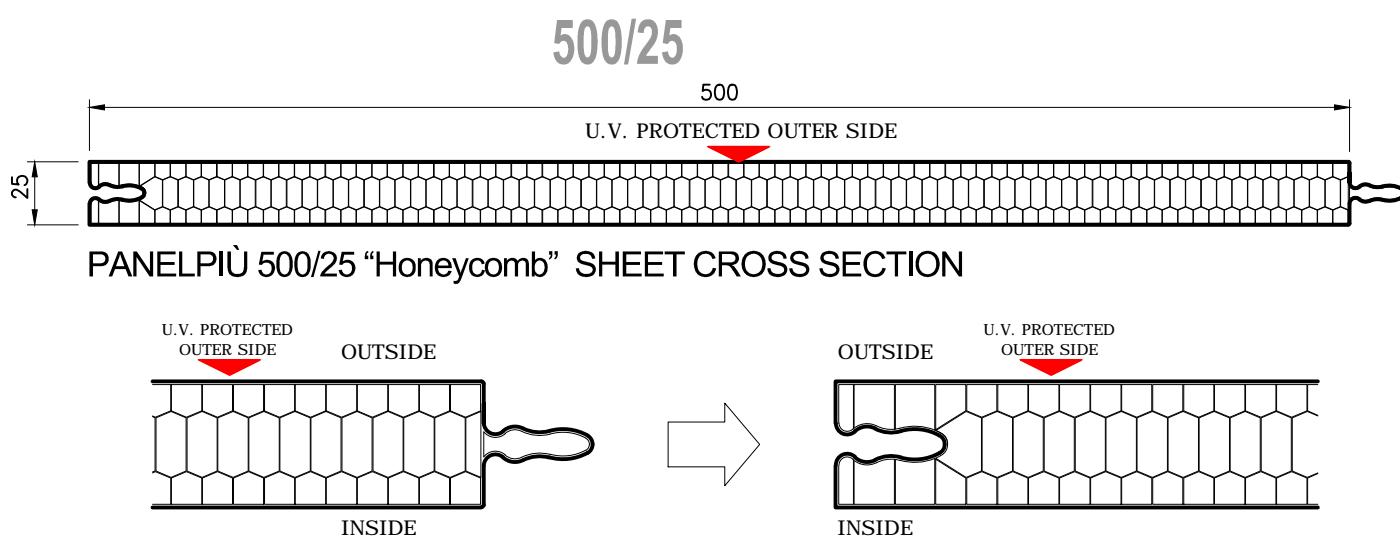
# MULTIWALL POLYCARBONATE SHEET CROSS SECTION



DETAIL OF TONGUE AND GROOVE JOINT

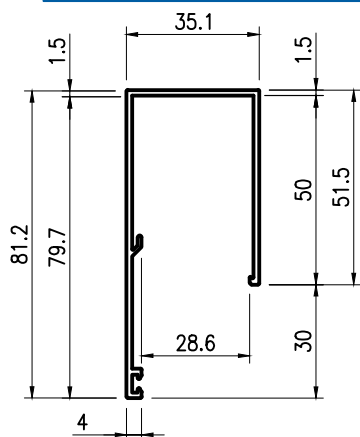


DETAIL OF TONGUE AND GROOVE JOINT

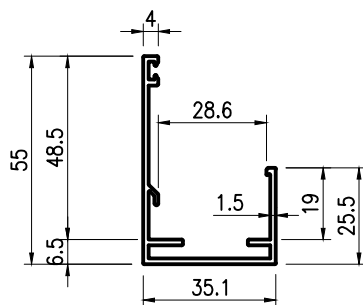


DETAIL OF TONGUE AND GROOVE JOINT

## ALUMINIUM PROFILES SIDE VIEW AND DETAIL OF ACCESSORIES



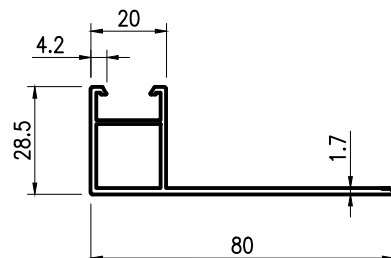
① UPPER Profile F2 P25



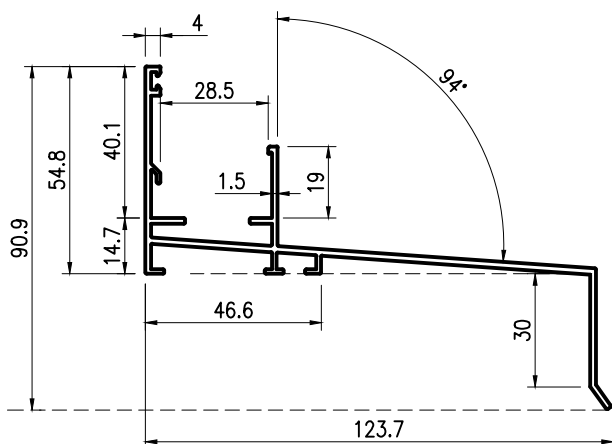
② LOWER Profile F1 P25



④ CLIP F44 FOR SIDE Profile

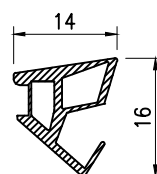


⑤ SIDE Profile F43P25

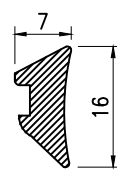


③ LOWER Profile with WALL COVER F6P25

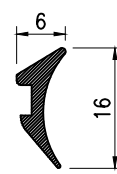
### GASKET



⑥ DU5090  
for thickness  
16 mm

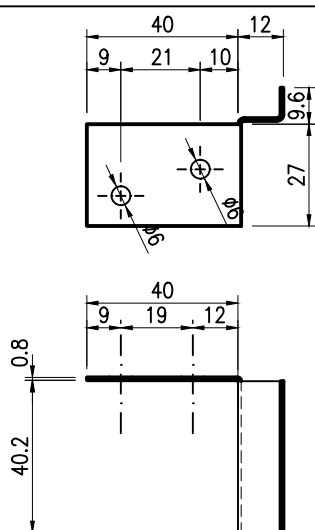


⑦ DU156  
for thickness  
20 mm



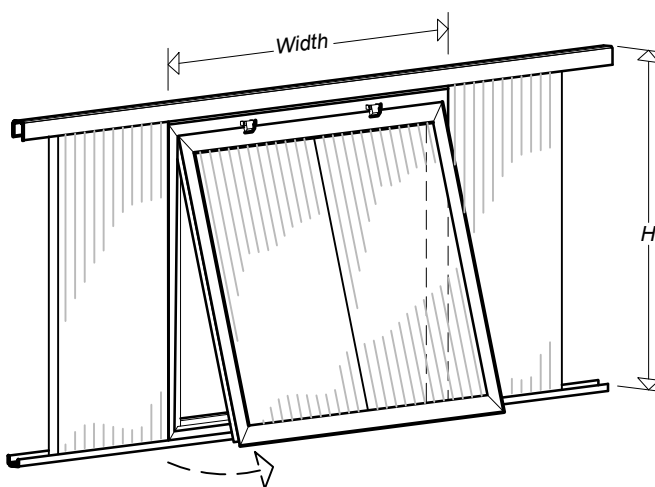
⑧ DU153  
for thickness  
25 mm

### FIXING CLAMP



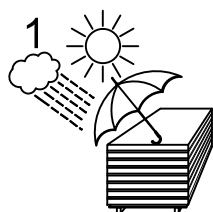
⑨ STEEL CLAMP

### OPENING WINDOW

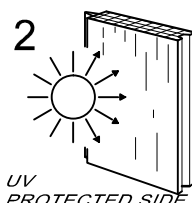


⑩ OPENING WINDOW  
WITH ALUMINIUM FRAME

# TECHNICAL RECOMMENDATIONS:



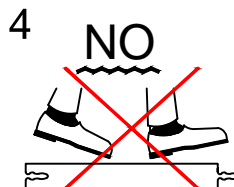
1. PROTECT THE SHEETS  
BY THE SUN AND RAIN



2. INSTALL THE SHEETS  
ALWAYS WITH THE UV  
PROTECTED LAYER  
FACING OUTWARDS

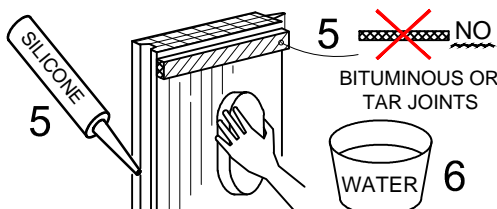


3. MULTIWALL  
POLYCARBONATE SHEETS  
CAN NOT BE WALKED UPON



4. DO NOT WALK ONTO THE  
SHEETS AT ANY TIME.  
FOLLOW SAFETY  
REGULATIONS AND SAFE  
METHODS OF INSTALLATION

POLYCARBONATE SUFFER THE CHEMICAL ATTACK OF SOME PRODUCTS, THEREFORE:



5. USE ONLY COMPATIBLE CLEAR SILICONE  
FOR THE SEALING

6. USE ONLY WATER AND MILD DETERGENTS  
FOR THE CLEANING

## RESISTANCE AGAINST CHEMICALS

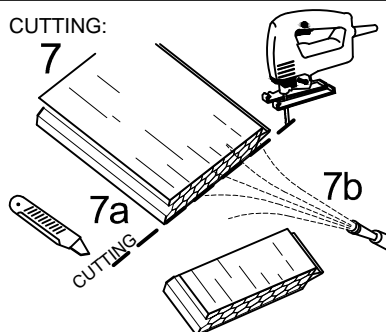
CHEMICALS	CHANGE
<b>INORGANIC SALTS</b>	
Sodium chloride 10%	Unchanged
Potassium nitrate 10%	Unchanged
Potassium bichromate 10%	Yellowing
Sodium sulphate 10%	Unchanged
Ammonium chloride	Unchanged
Sodium bicarbonate 10%	Surface cracking
<b>INORGANIC ACIDS</b>	
Hydrochloric acid 35%	Cracking
Hydrochloric acid 10%	Unchanged
Sulphuric acid 70%	Unchanged
Sulphuric acid 30%	Unchanged
Nitric acid 40%	Yellowing
Nitric acid 10%	Yellowing
Chromic acid 10%	Unchanged
Concentrated hydrofluoric acid	Unchanged
<b>ALKALIS</b>	
Sodium hydrate 1%	Unchanged
Sodium hydrate 10%	Light clouding
Ammonium hydrate 10%	Darkening and disintegration
Calcium hydrate 10%	Unchanged
<b>ORGANIC ACIDS</b>	
Acetic acid 70%	Unchanged
Acetic acid 10%	Unchanged
Formic acid 30%	Unchanged

CHEMICALS	CHANGE
Lactic acid 5%	Unchanged
Oxalic acid 10%	Unchanged
Benzoic acid 10%	Unchanged
Oleic acid 100%	Unchanged
<b>LUBRICATING OILS</b>	
Silicone oil	Unchanged
Paraffin oil	Unchanged
Machine oil	Unchanged
<b>PLASTICIZERS</b>	
Tricresyl phosphate	Light clouding
Diocetyl adipate	Unchanged
Diocetyl phthalate	Unchanged
Butyl stearate	Unchanged
Acid trimethyl esters	Unchanged
<b>ALCOHOLS</b>	
Methyl alcohol	Surface cracking
Ethyl alcohol 50%	Unchanged
n-Butanol	Unchanged
Ethylene glycol	Unchanged
<b>VARIOUS</b>	
Benzole	Rapid decomposition
Toluol	Rapid decomposition
Industrial petrol	Yellowing, opacifying and cracking
Kerosene	Unchanged
Diesel oil	Unchanged
n-Heptane	Unchanged
Cyclohexane	Unchanged

CHEMICALS	CHANGE
Methyl isobutyl ketone	Clouding and softening
Butyl acetate	Clouding and softening
Methyl methacrylate	Clouding and softening
Acrylonitrile decomposition	Rapid
Vinyl acetate	Clouding and softening
Styrole	Clouding and softening
Ethyl ether (5 °C)	Swelling
Diethylenetriamine	Slow decomposition
Ethylenediamine	Slow decomposition
Triethanolamine	Surface cracking
Phenol 5%	Yellowing and opacifying
Cresol	Unchanged
Formalin	Unchanged
Hydrogen dioxide 10%	Light yellowing
Triammoniumcitrate (pH = 9)	Unchanged
Triammoniumcitrate (pH = 5)	Unchanged

Testing temperature = + 23 °C

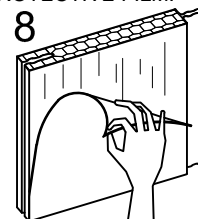
CUTTING:



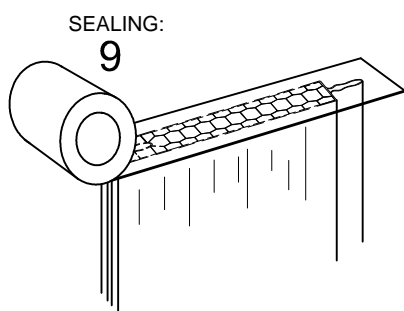
THE PANELPIU' SHEETS ARE SUPPLIED TO THE EXACT LENGTH REQUIRED AND SEALED AT THE ENDS WITH AN ALUMINIUM FOIL TAPE

7a. CUTTING OF THE SHEETS CAN BE EXECUTED ON SITE BY MEANS OF A HACK SAWING MACHINE (1) OR OF A CUTTER (2). SEAL THE OPEN CELLS AFTER THE CUTTING.  
7b. BLOW OR VACUUM DUST IN EXCESS AFTER CUTTING BEFORE SEALING ENDS

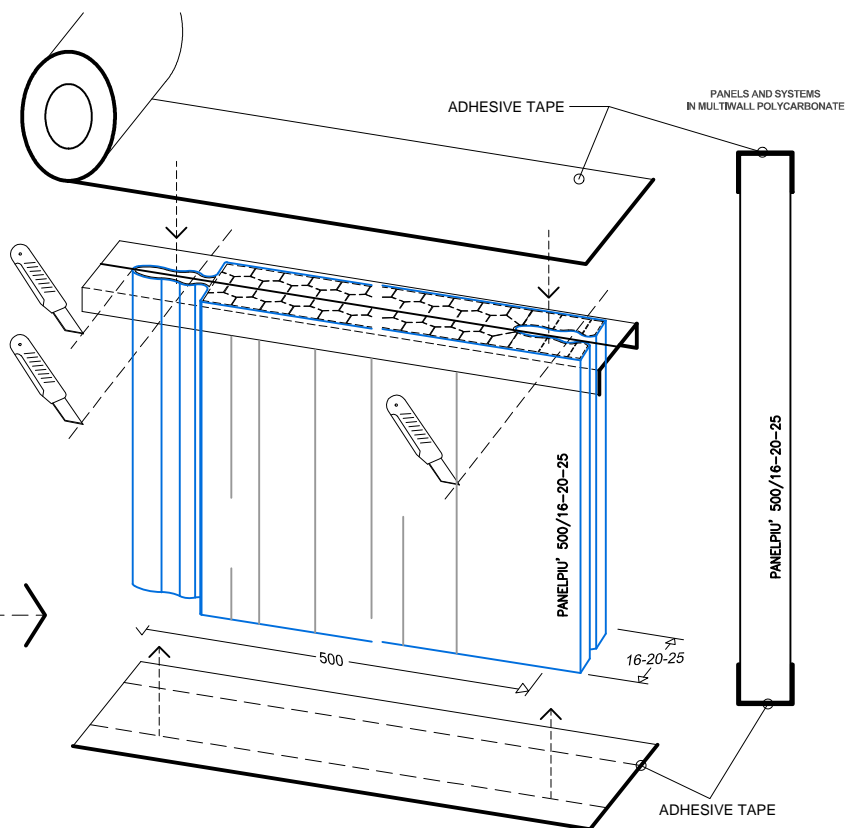
PROTECTIVE FILM:



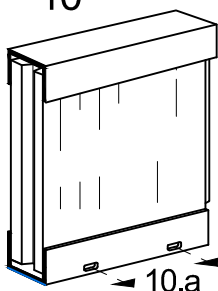
8. TAKE OFF THE PROTECTIVE FILM BEFORE THE INSTALLATION



9. SEAL THE OPEN CELLS WITH AN ADHESIVE ALUMINIUM TAPE

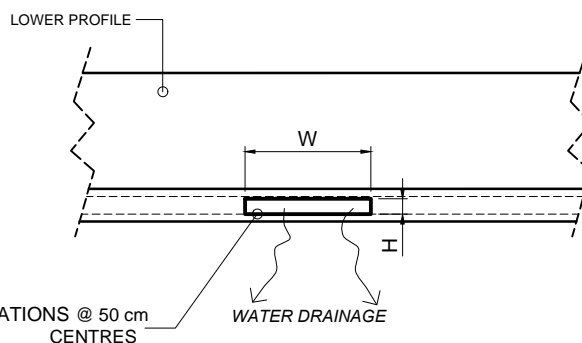


PROFILES:  
10

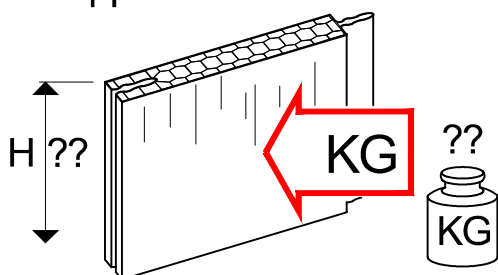


10. PROTECT THE SEALING WITH AN UPPER AND A LOWER PROFILE

10.a LOWER PROFILES SUPPLIED PERFORATED FOR WATER DRAINAGE

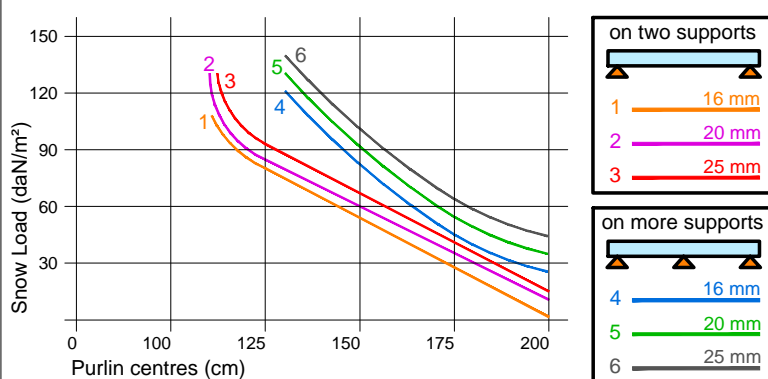


LOADINGS AND SPACINGS:  
11



11. CHECK OUR TECHNICAL LITERATURE TO DETERMINE LOADING AND SPACING OF THE WHOLE SYSTEM

LOADING TABLE PANELPIU' 500/16-20-25  
FLAT APPLICATION, ON TWO AND MORE SUPPORTS

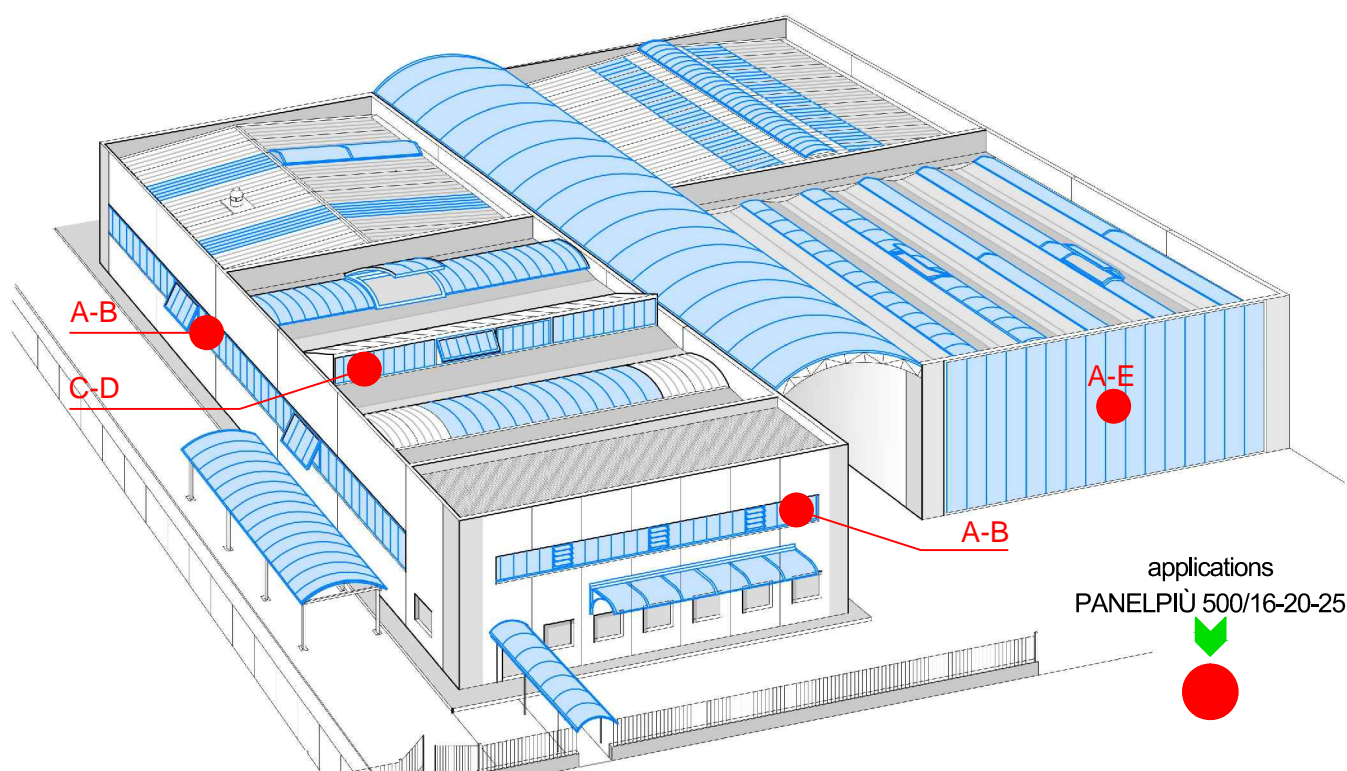


WARRANTY & CERTIFICATIONS:  
12



PRODUCTS ARE COVERED BY A 10-YEAR WARRANTY – PLEASE CHECK THE TERMS OF OUR WARRANTY FOR MORE DETAILS.  
PLEASE CONTACT OUR TECHNICAL DEPT. FOR MORE DETAILS ON THE CERTIFICATIONS.

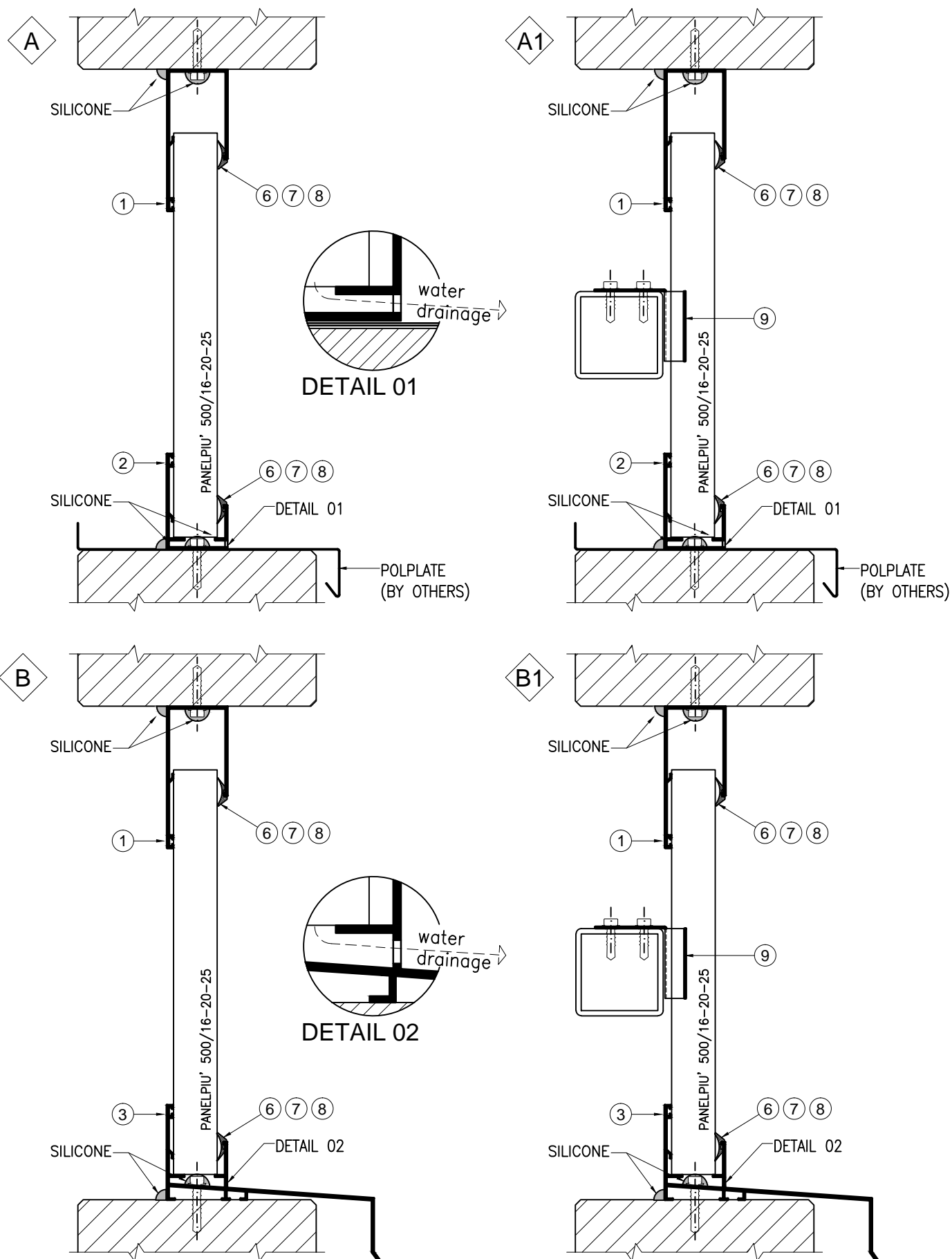
## APPLICATIONS PANELPIÙ 500/16-20-25:



- ◊ A VERTICAL GLAZING
- ◊ A1 VERTICAL GLAZING WITH MIDDLE PURLIN
- ◊ B VERTICAL GLAZING WITH LOWER PROFILE WITH WALL – COVER
- ◊ B1 VERTICAL GLAZING WITH LOWER PROFILE WITH WALL – COVER AND MIDDLE PURLIN
- ◊ C SLOPED NORTHLIGHT
- ◊ C1 SLOPED NORTHLIGHT WITH MIDDLE PURLIN
- ◊ D OUTER VERTICAL GLAZING
- ◊ D1 OUTER VERTICAL GLAZING WITH MIDDLE PURLIN

# VERTICAL APPLICATION - SIDE VIEW

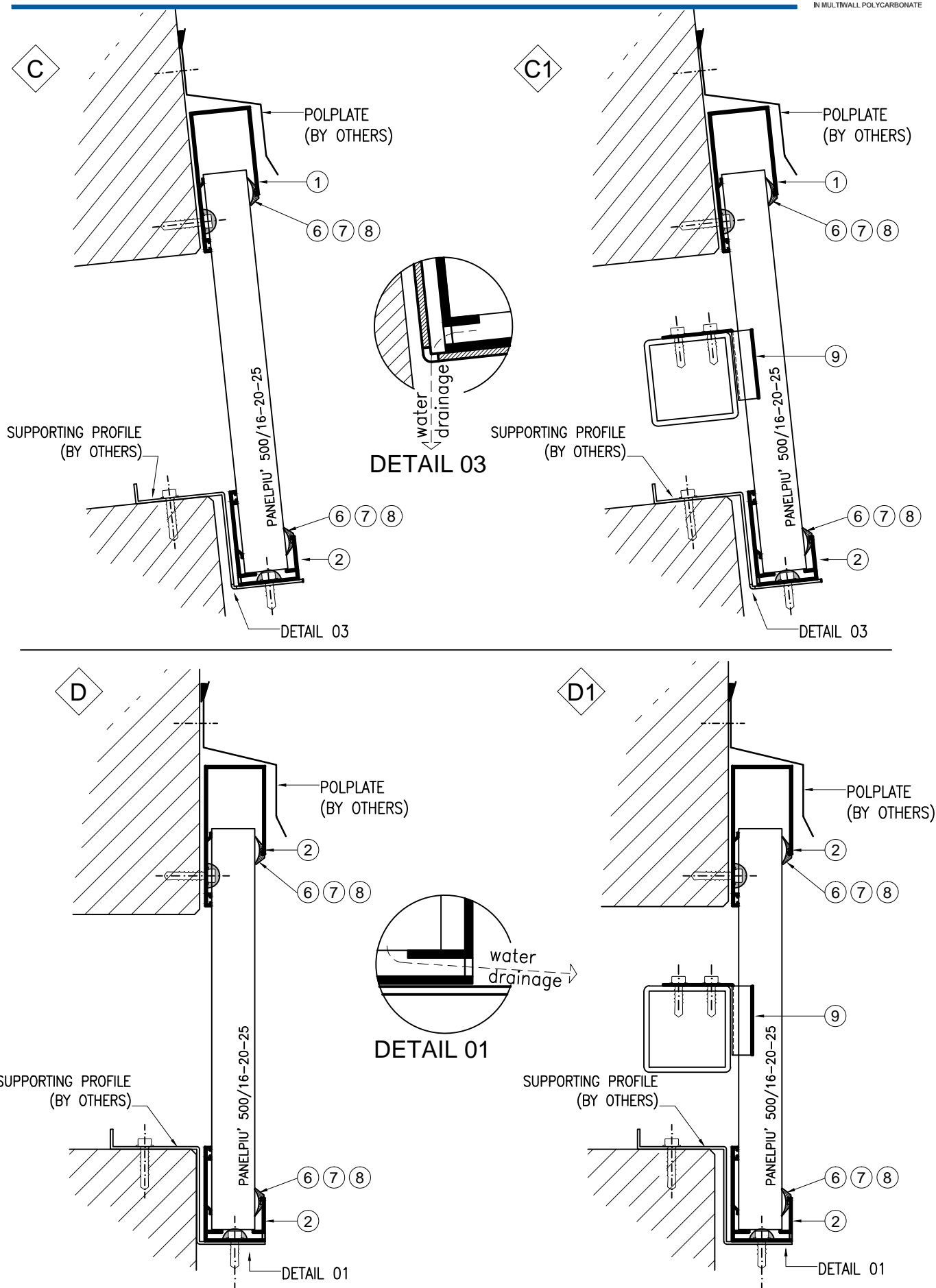
PANELS AND SYSTEMS  
IN MULTIWALL POLYCARBONATE





# VERTICAL APPLICATION - SIDE VIEW

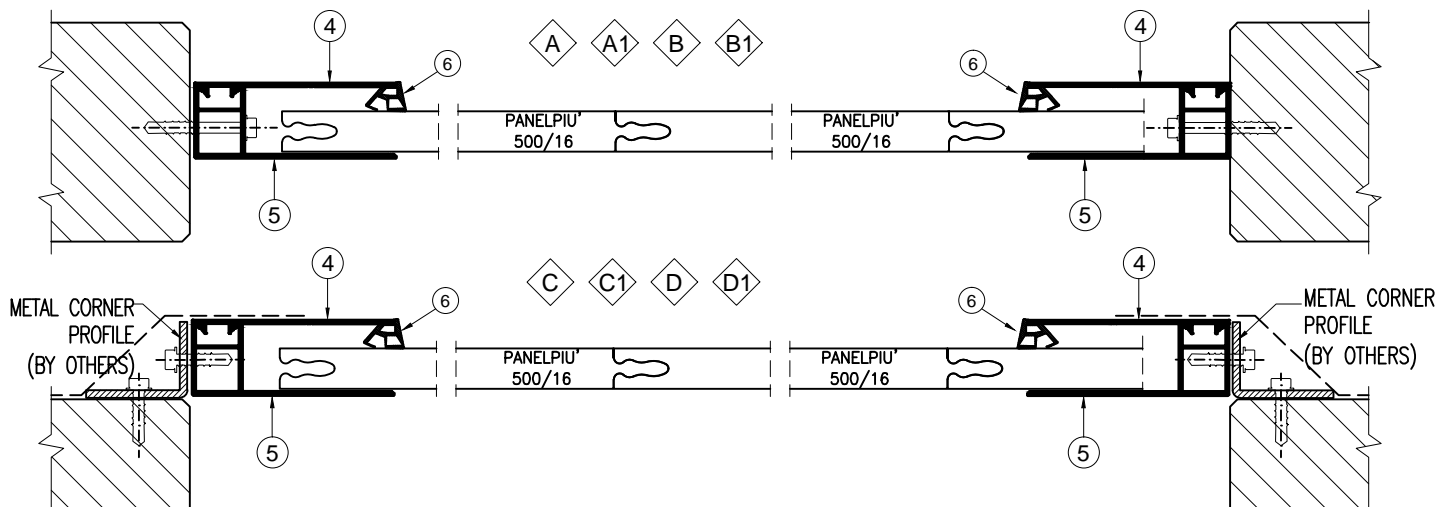
PANELS AND SYSTEMS  
IN MULTIWALL POLYCARBONATE



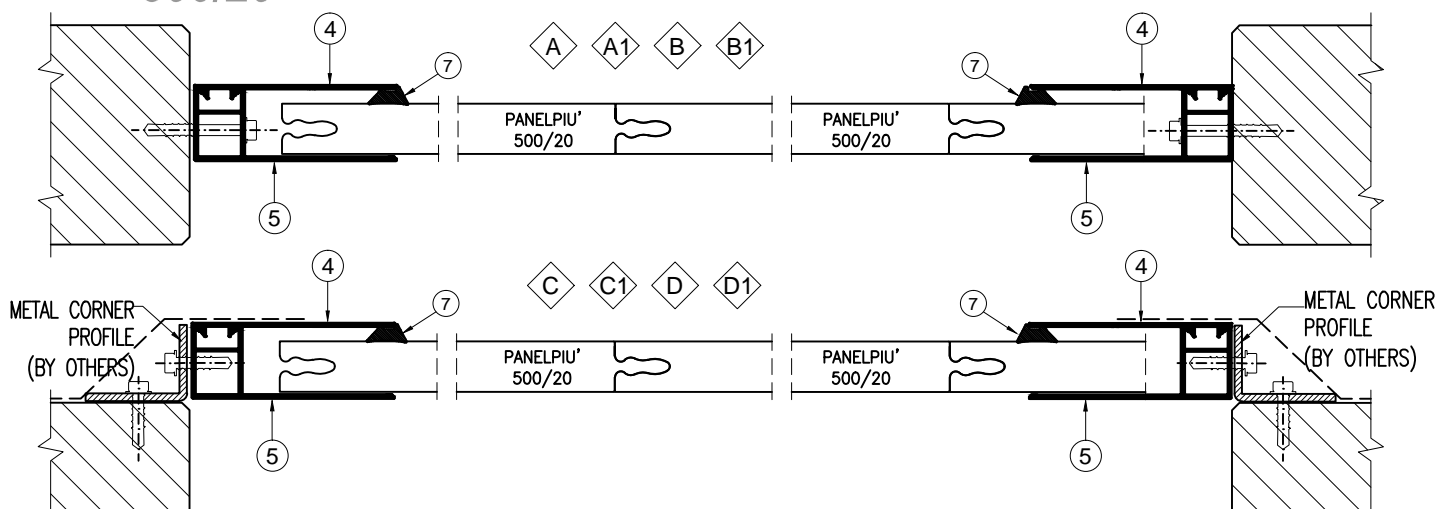
# HORIZONTAL APPLICATION ON CROSS SECTION

PANELS AND SYSTEMS  
IN MULTIWALL POLYCARBONATE

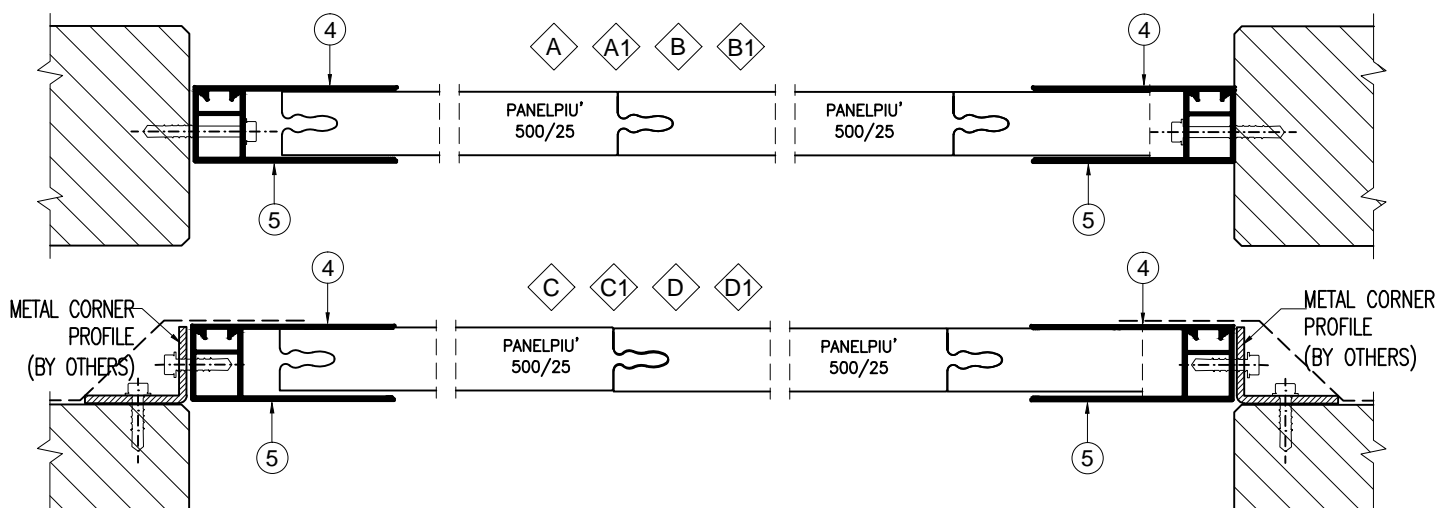
## 500/16



## 500/20



## 500/25



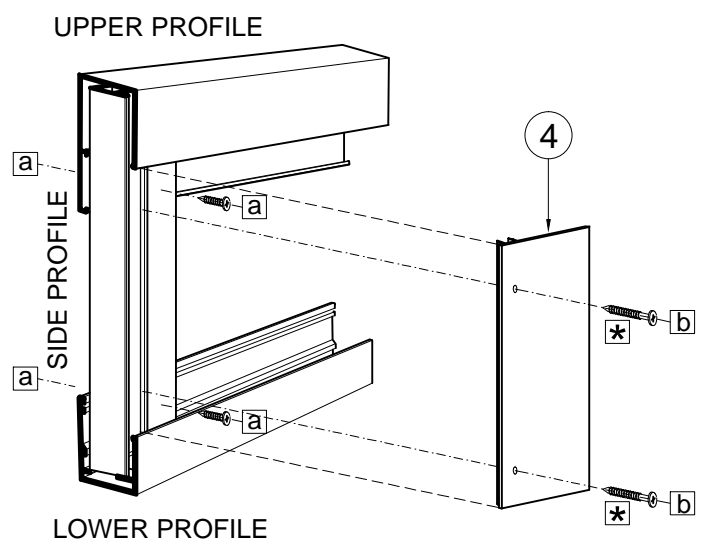
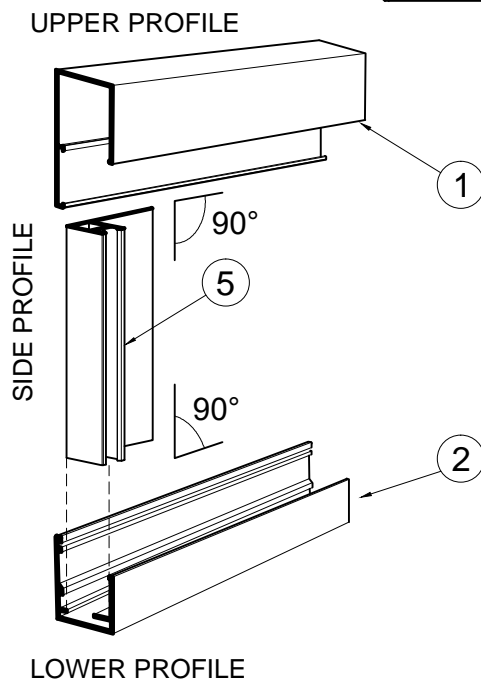
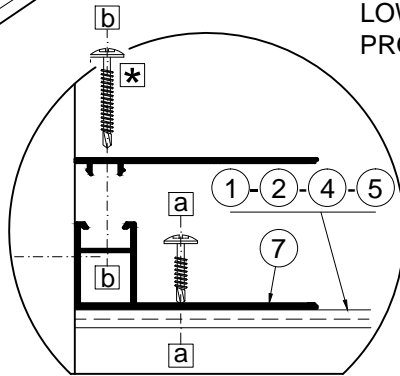
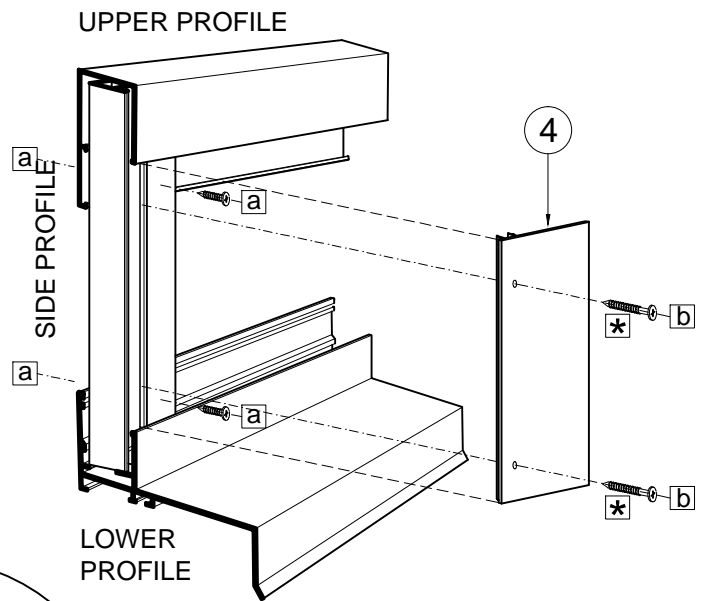
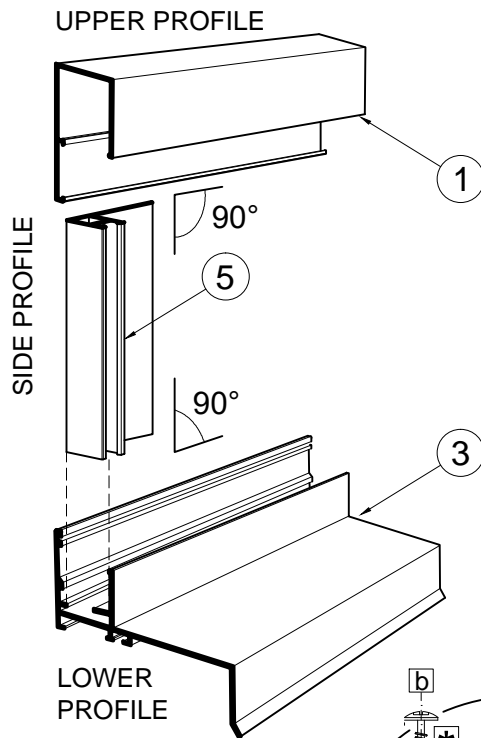
# CONNECTION BETWEEN PROFILES

PANELS AND SYSTEMS  
IN MULTIWALL POLYCARBONATE

★ Fixing @ 50 cm

a Fixing a

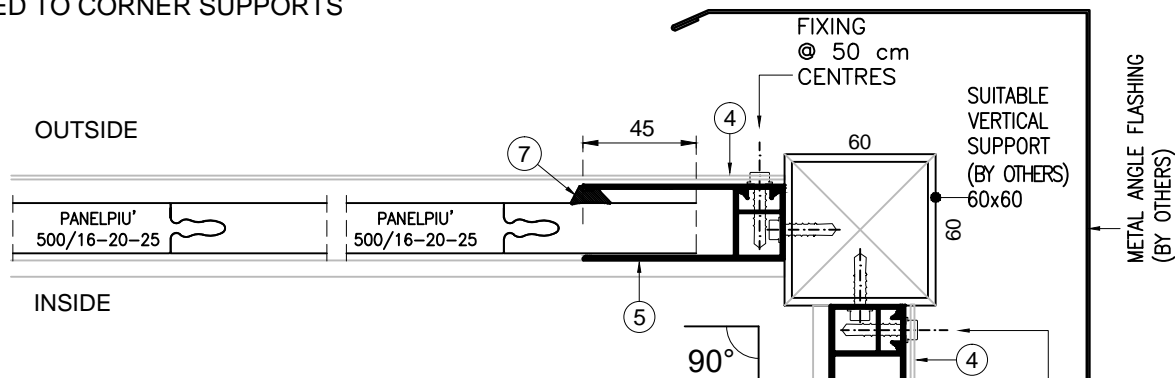
b Fixing b



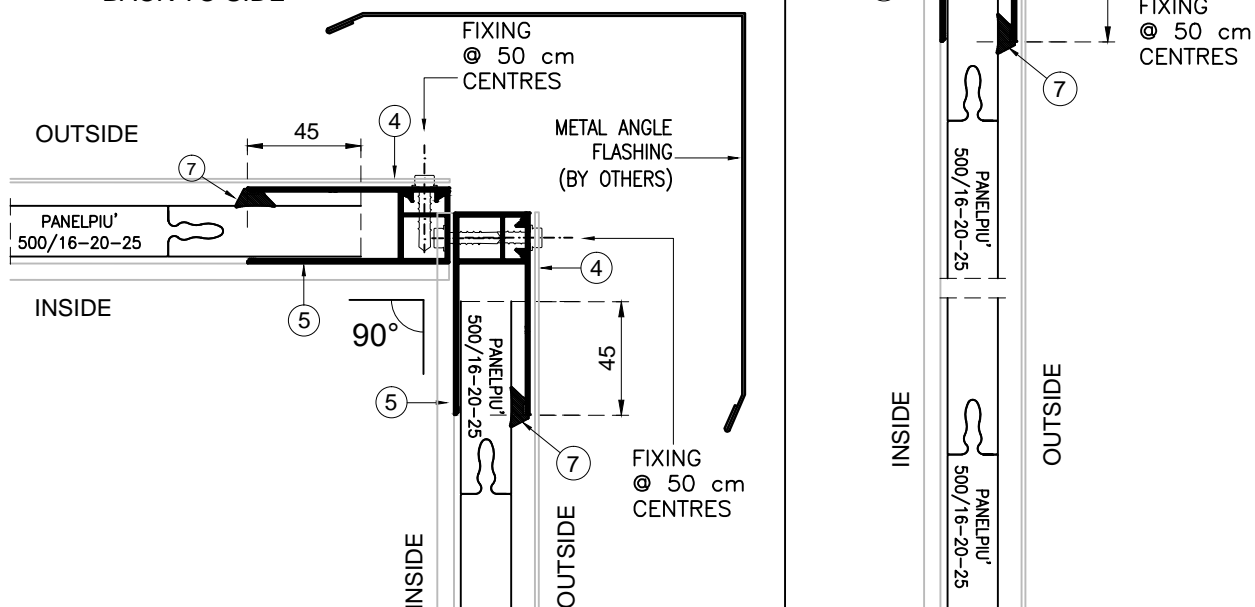
# EXTERNAL CORNER

PANELS AND SYSTEMS  
IN MULTIWALL POLYCARBONATE

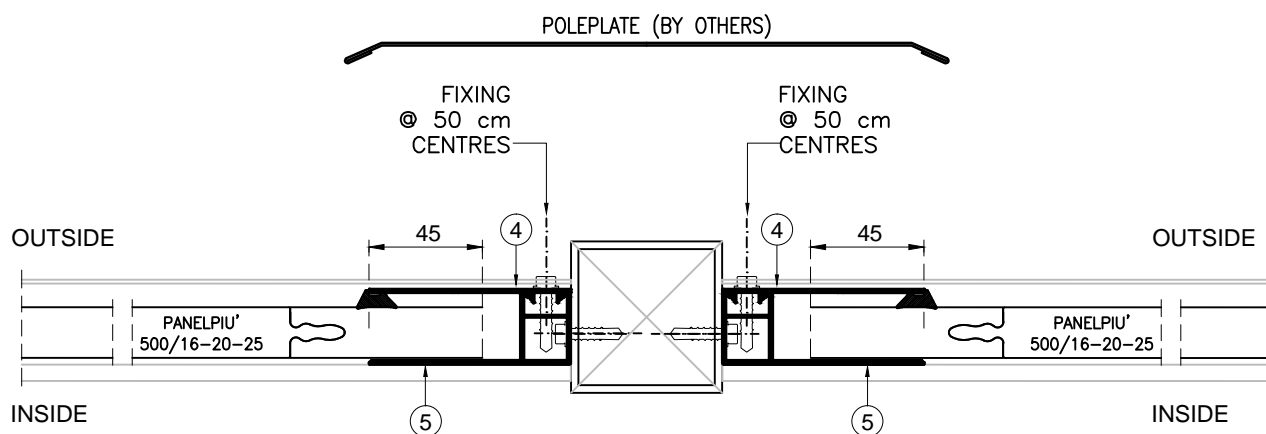
## A. CORNER DETAIL WITH ALUMINIUM PROFILES FIXED TO CORNER SUPPORTS



## B. CORNER DETAIL WITH ALUMINIUM PROFILES BACK TO SIDE



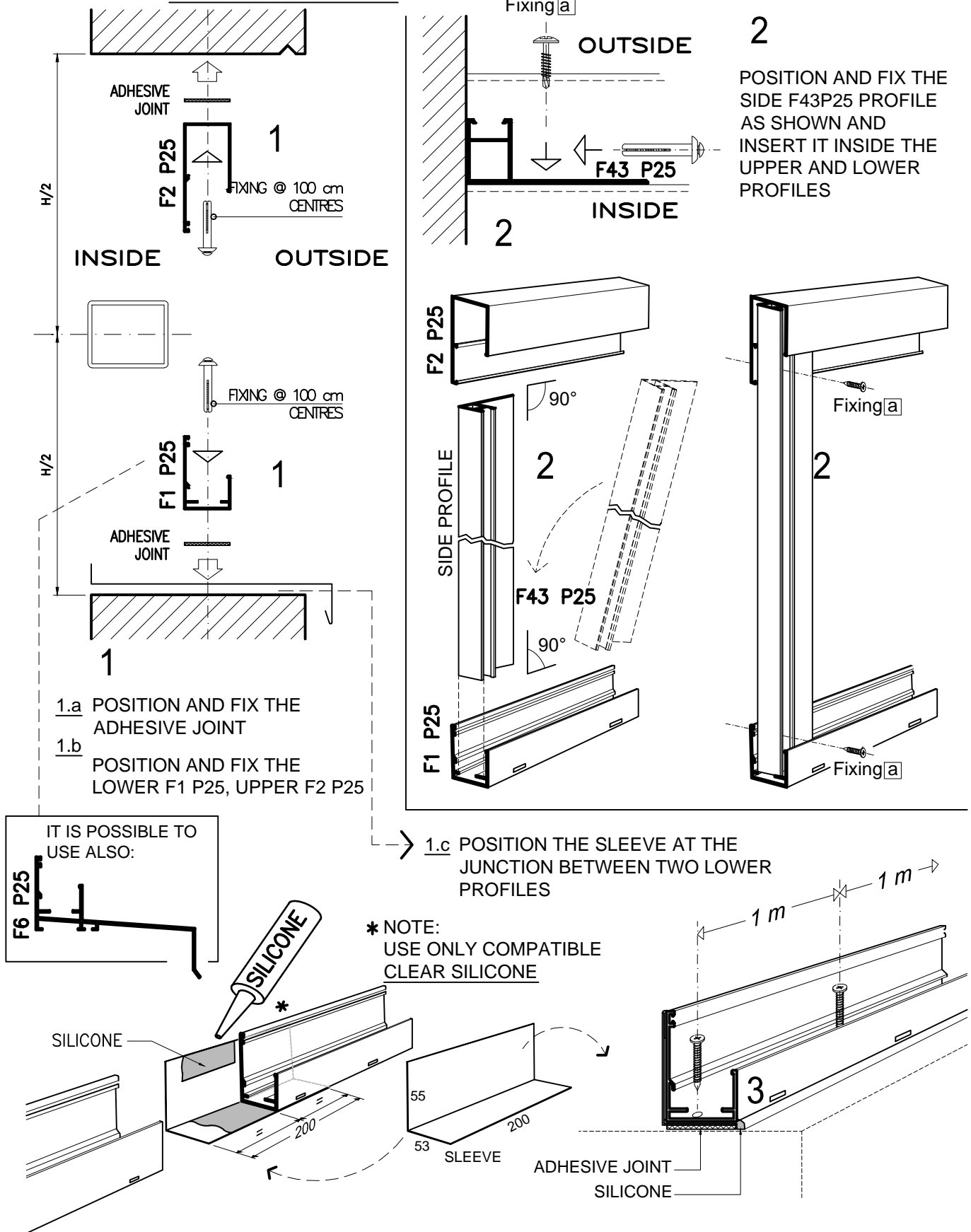
## REALIZATION OF INTERRUPTION OF GLAZING OR OF EXPANSION JOINT



# TYPICAL INSTALLATION GUIDE FOR FIXED GLAZING

PANELS AND SYSTEMS  
IN MULTIWALL POLYCARBONATE

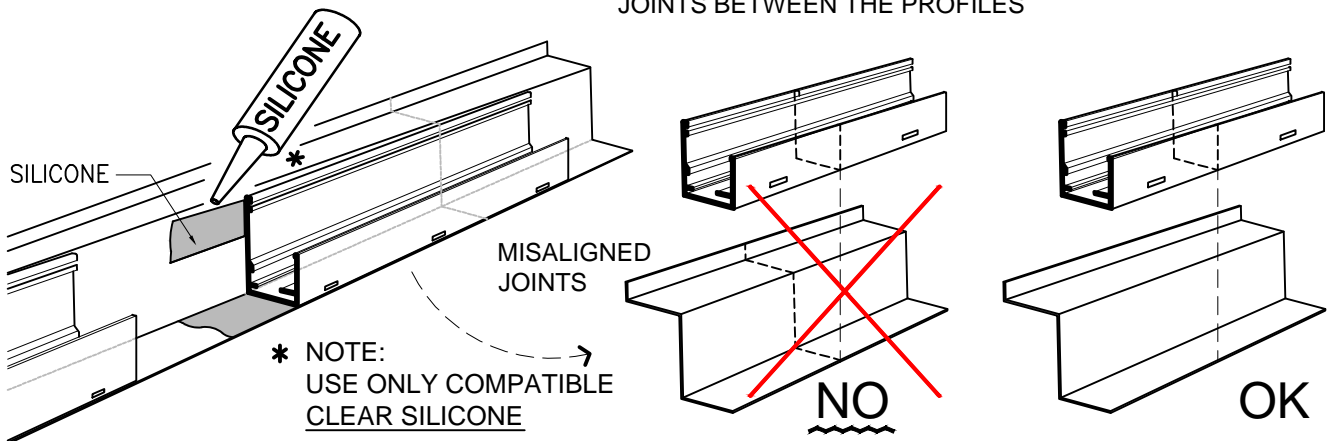
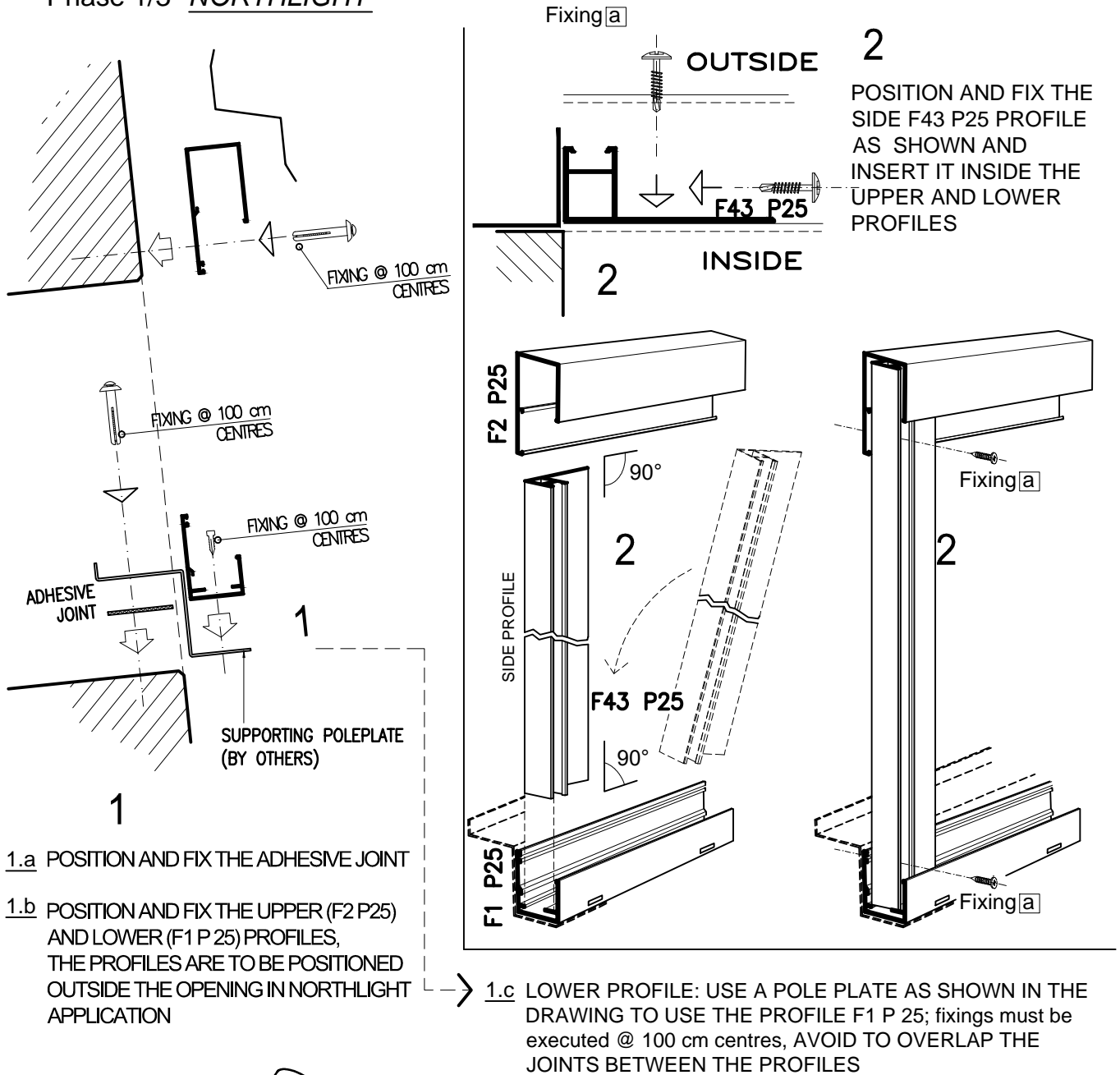
## Phase 1/3 - VERTICAL GLAZING



# TYPICAL INSTALLATION GUIDE FOR FIXED GLAZING

## Phase 1/3 - NORTHLIGHT

PANELS AND SYSTEMS  
IN MULTIWALL POLYCARBONATE



## TYPICAL INSTALLATION GUIDE FOR FIXED GLAZING

PANELS AND SYSTEMS  
IN MULTIWALL POLYCARBONATE

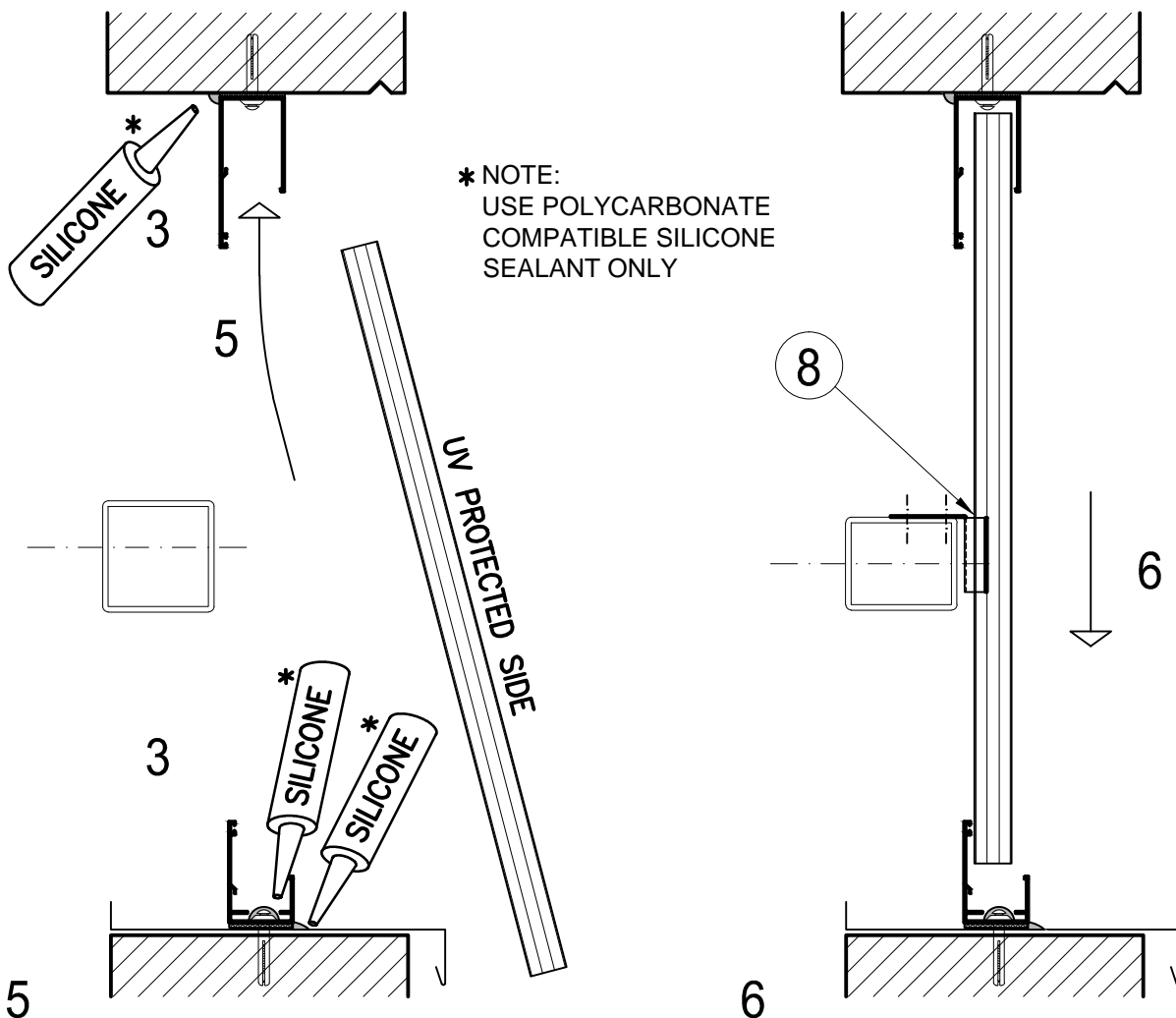
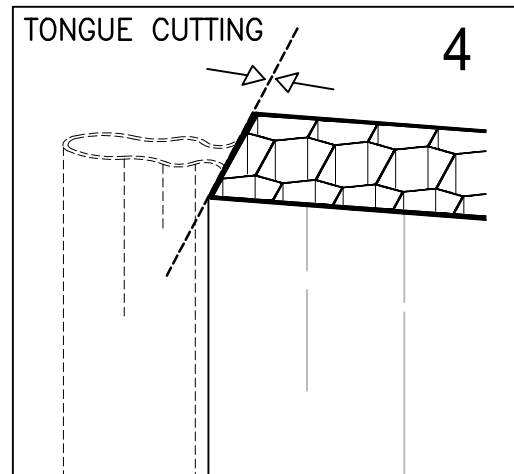
### Phase 2/3

3

SILICONE THE HEADS OF SCREWS AND THE JUNCTION BETWEEN THE INNER SIDE AND THE SUPPORT

4

CUT OFF THE TONGUE OF THE FIRST SHEET PANELPIÙ 500 SO THAT IT CAN BE INSERTED INTO THE VERTICAL PROFILES (fig. 7)

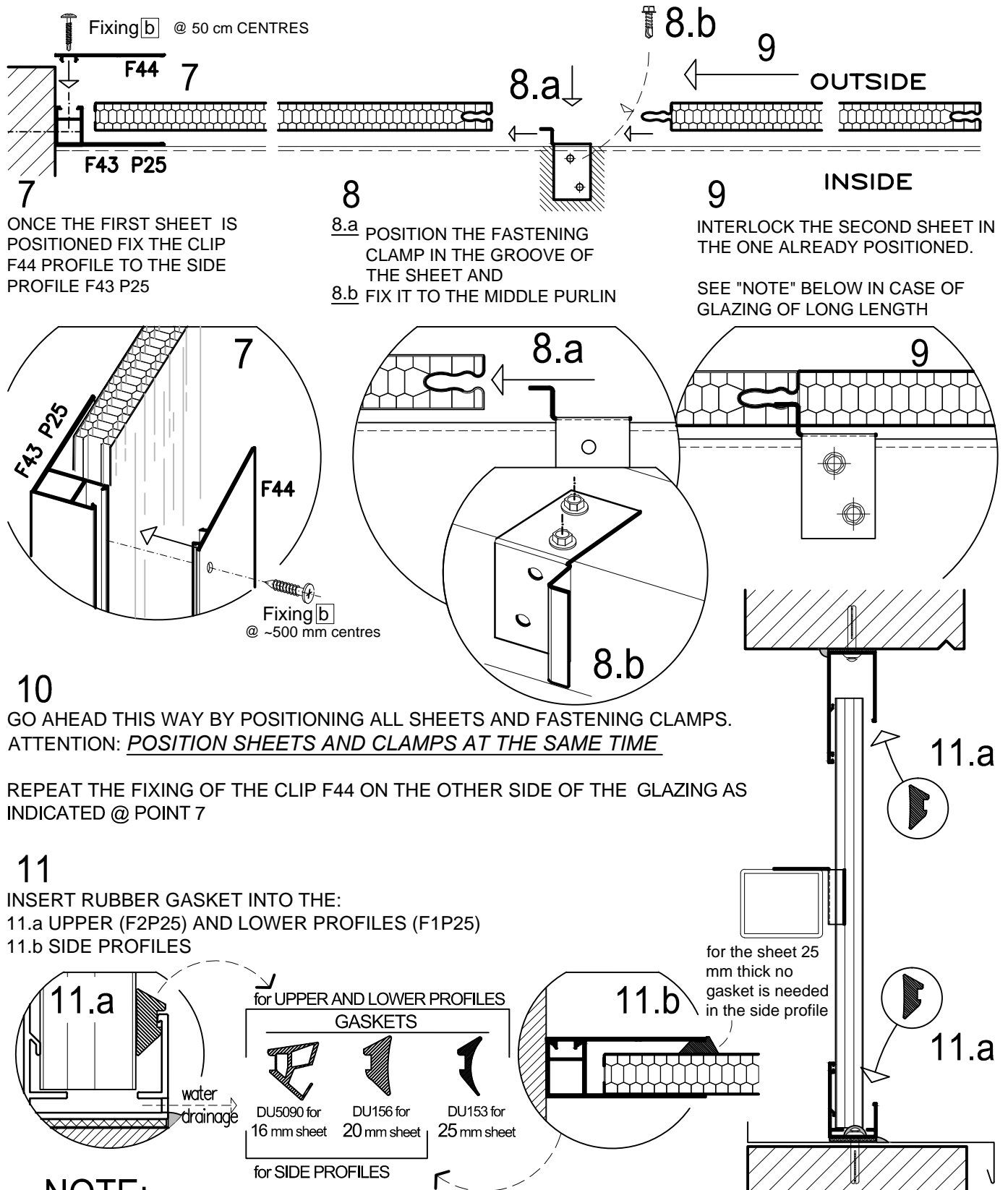


5-6 POSITION THE FIRST SHEET BY SLIDING IT VERTICALLY INSIDE THE UPPER PROFILE AND THEN DOWN INTO THE LOWER PROFILE

# TYPICAL INSTALLATION GUIDE FOR FIXED GLAZING

PANELS AND SYSTEMS  
IN MULTIWALL POLYCARBONATE

## Phase 2/3

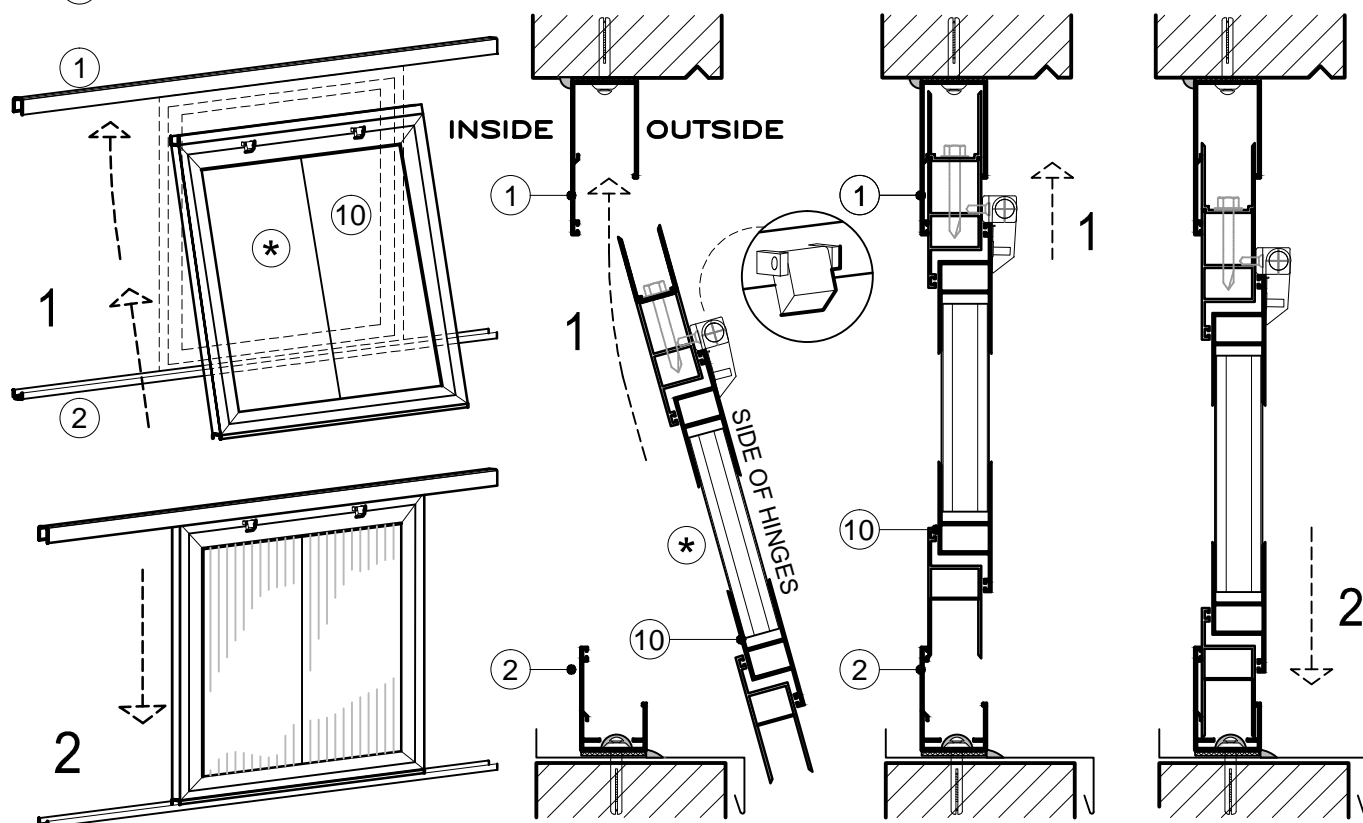




# FITTING GUIDE FOR OPENING SECTION

PANELS AND SYSTEMS  
IN MULTIWALL POLYCARBONATE

\* NOTE: THE WINDOW FRAME IS SUPPLIED PRE-ASSEMBLED AND COMPLETE WITH POLYCARBONATE SHEETS



POSITION, FIX AND SILICONE THE UPPER AND THE LOWER PROFILES AS SHOWN IN THE GUIDE SECTION FOR THE FIXED VERTICAL GLAZING (PAGES 14 & 15)

1 - 2

POSITION THE WINDOW FRAME (SHUT) AS SHOWN BELOW BY SLIDING IT UP INTO THE UPPER PROFILE AND THEN DOWN INTO THE LOWER PROFILE.

