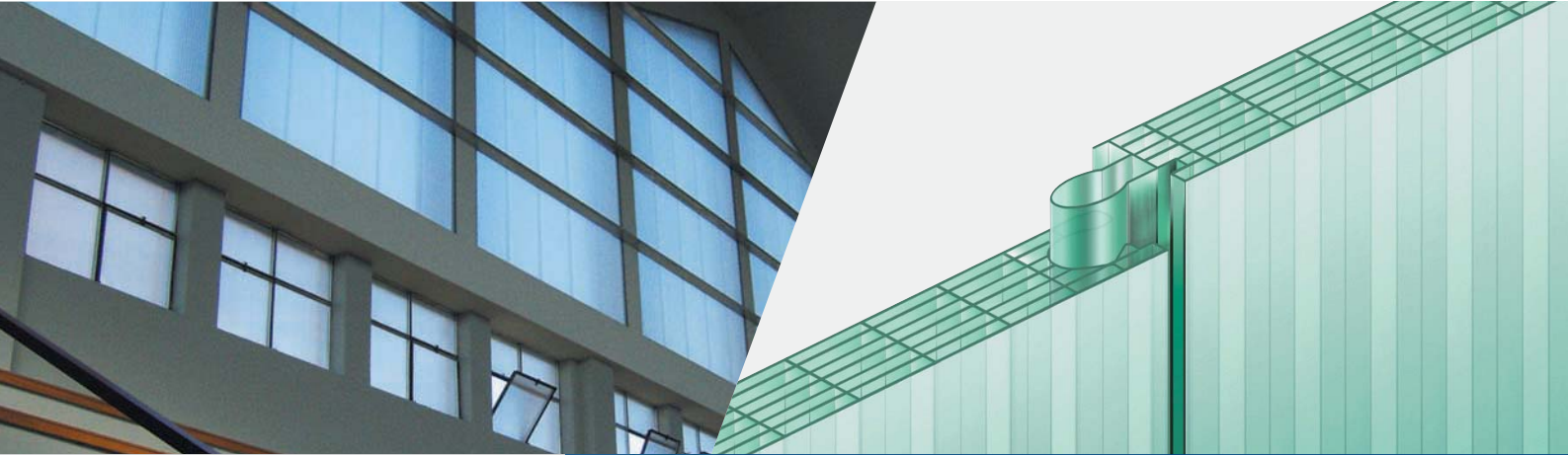


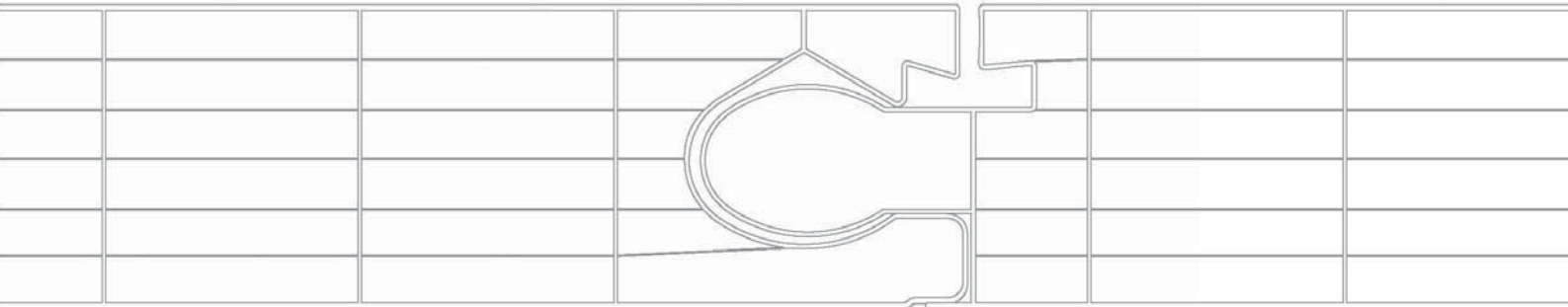


Rockwell
GLAZING SOLUTIONS



Module 500/40

Vertical



Rockwell Sheet Sales Ltd
Rockwell House
Birmingham Road
Millisons Wood
Coventry, CV5 9AZ

Tel 01676 523386
Fax 01676 523630
Email info@rockwellsheet.com
www.rockwellsheet.com





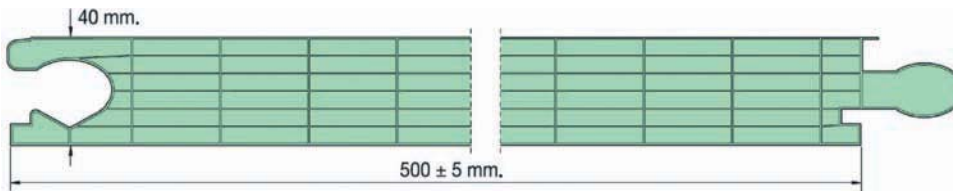
Module 500/40

Vertical

Simple / Safe / Stylish

Module 500/40 - A modern vertical glazing system offering high light transmission and excellent thermal insulation combined with simple installation. Ideally suited to all high and low level glazing applications, Module 500/40 can also be utilised for internal partitions, building facades and rain screen cladding. It offers the architect and contractor a range of design advantages:

- Available in long lengths - up to 8m if required
- Part L compliant thermal insulation value of 1.08 W/m²K
- Filters 98% of harmful UV light
- Withstands temperature variations between -40°C and +130°C
- Minimum of system components for quick, simple and secure fixing
- Choice of clear and 10 attractive sheet colours
- Top hung and louvered opening windows available
- Silver anodized or RAL/BS colour powder coated aluminium perimeter trims
- Fully recyclable materials with minimal environmental impact
- B-s1-d0 Euroclass fire rated (equivalent UK Class 0)



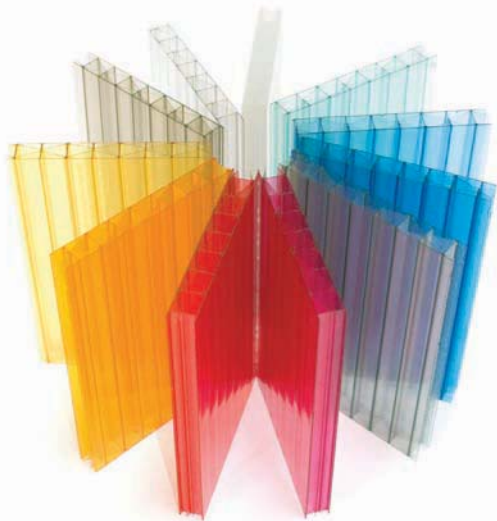
Module 500/40

Vertical



Module 500/40

Vertical



Connect with colour

Module 500 is available in 11 attractive sheet finishes with system accessories available powder coated to any colour.



Module 500/40

Vertical

Quick Installation

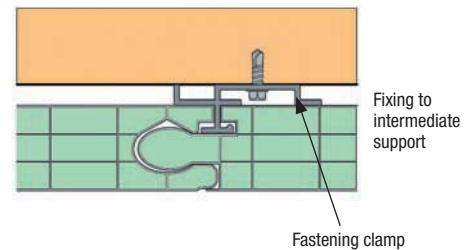
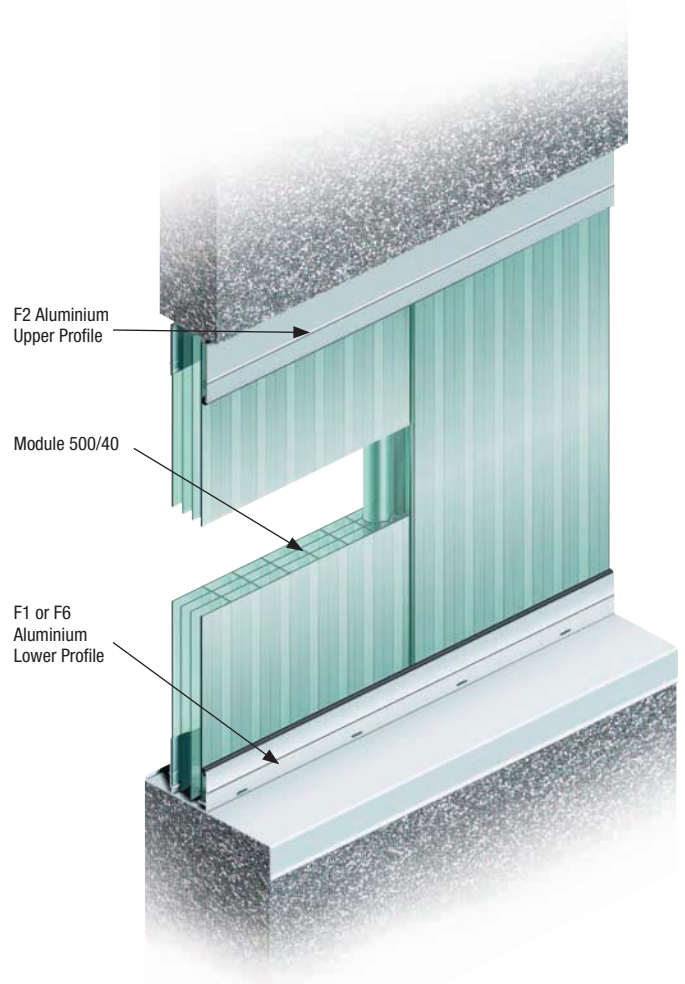
With the minimum of components, Module 500/40 is a glazing system of unrivalled simplicity.

Module 500 does not require traditional glazing bars. Instead the sheets are connected together by their watertight tongue and groove edge joints, thus effectively creating one large glazing panel.

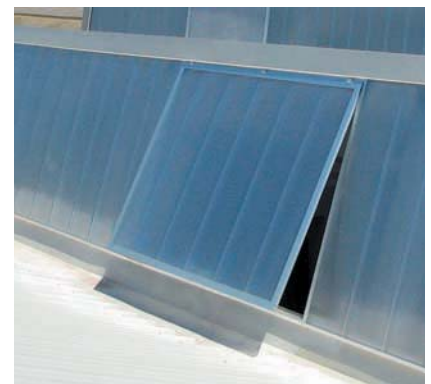
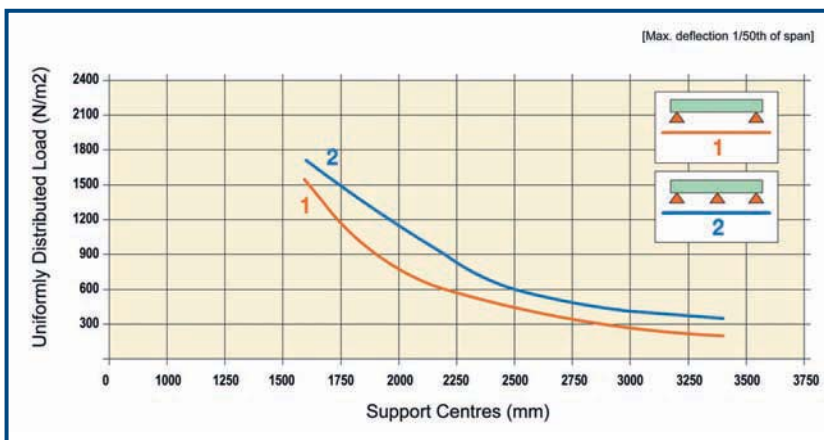
The sheets are located within durable anodised aluminium framing trims at the top and bottom of the glazing. For taller glazed areas, use is made of hidden aluminium fastening clamps which are positioned within the sheet joints and secure the glazing back to suitable horizontal secondary supports.

This unique fastening system leaves the outer face of the glazing perfectly smooth and free of visible mechanical fixings.

Matching top hung opening window frames can be incorporated within the Module 500/40 vertical glazing system. The factory assembled units can be connected to manual or electric actuator mechanisms and are supplied with rubber gaskets to maintain a weatherproof seal.



Spanning & Loading Data



Technical Specification

Sheet/module width, thickness & structure	500mm wide (+/-5mm) x 40mm thick 7-wall polycarbonate
Sheet length	Made to length (max. 8m) in c.4 weeks
Standard sheet colours	Opal white or clear with satinized surface texture
Special sheet colours (subject to min. quantity/surcharge)	Bronze, sea grass green, light grey, light blue, pacific blue, sunburst yellow, amber cherry red & fuchsia pink tints. Also a solar ice reflective surface coating is available.
Average system weight	c.4.0 Kg/m ²
Thermal transmittance	U-Value: 1.08 W/m ² K
Perimeter profile type/finish	Anodized silver aluminium or PPC in 6m stock lengths, average weight c.1.0Kg/m
Noise reduction	23dB (DIN 52210-75 Rw)
Light transmission	Clear: 45% Opal: 23%
Solar Factor (G-value)	Clear: 0.63 Opal: 0.36
Support structure	Suitable metal sections/angles, timber or blockwork as required
Working temperature range	-40°C to +130°C (+100°C for prolonged exposure)
Fire classification	Euroclass - EN13501-1 2006 B-s1, d0 (as UK Class 0)
System extras available	Anodized aluminium sill profiles and top hung windows, mill finish/PPC thermal break profiles
Warranty period	10 year limited warranty covering discolouration and hailstone damage
Impact resistance	High resistance achieved with tests simulating hail and balls

Image courtesy of Stubbs Rich Architects



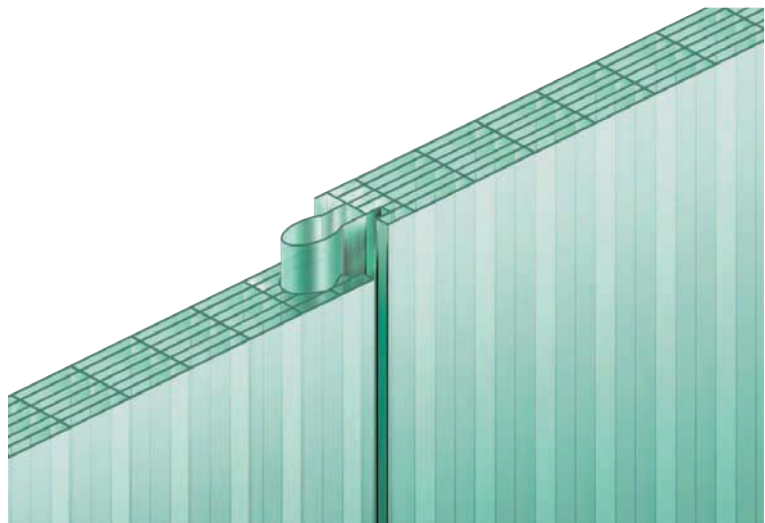
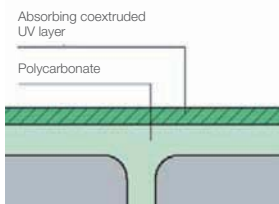
Module 500/40

Vertical

A comprehensive range of dwg files relating to this system are available to download at: www.rockwellsheet.com

Polycarbonate Properties

Characteristics	Kind of test	Unit	Standard	Values
Mechanical	Tensile stress at yield	N/mm ²	DIN 53455	>60
	Tensile stress at break	N/mm ²	DIN 53455	>70
	Extension under stress	%	DIN 53455	6-8
	Extension under breaking	%	DIN 53455	<100
	Elastic module/flexural modulus	N/mm ²	DIN 53457	2300
	IZOD notched impact resistance (23°C)	J/m	ASTM D256	700
Physical	Density	g/cm ³	DIN 53479	1.2
	Refraction index		DIN 53491	1.59
	Water absorption (24h - 23°C) in immersion	%	DIN 53495	0.36
	Steam permeability (thickness 0.1m/24h)	g/m ³	DIN 53122	15
Thermal	VST/B vicat heat resistance temperature	°C	DIN 53460	145-150
	Linear thermal expansion	1/°C	VDE 034/1	6.7x10 ⁻⁵
	Thermal conductivity	W/m°C	DIN 52612	0.21



UV Protection

A protective UV absorbing layer is applied during the sheet extrusion. This ensures long life and prevents transmission of 98% of harmful UV radiation.

All information and recommendations for use are given in good faith. In line with a policy of continuous improvement Rockwell reserves the right to amend specifications without prior notice. For further advice on the general use of polycarbonate products view the FAQ's section of Rockwell's web site.

Rockwell Sheet Sales Ltd
Rockwell House
Birmingham Road
Millisons Wood
Coventry, CV5 9AZ

Tel 01676 523386
Fax 01676 523630
Email info@rockwellsheet.com
www.rockwellsheet.com

