

STANDARD INSTALLATION GUIDE FOR MODULE 500/40 VERTICAL GLAZING SYSTEM

1) First ensure the linearity of the surface you wish to glaze and install suitable flashings/sills where required.

The F2 upper profile can be fixed directly to the supporting structure with suitable screws at max. 500mm centres.

Similarly install the F1 lower profile on to the lower supporting structure. Ensure the vents/weep holes in the F1 profile are on the outside of the glazing.

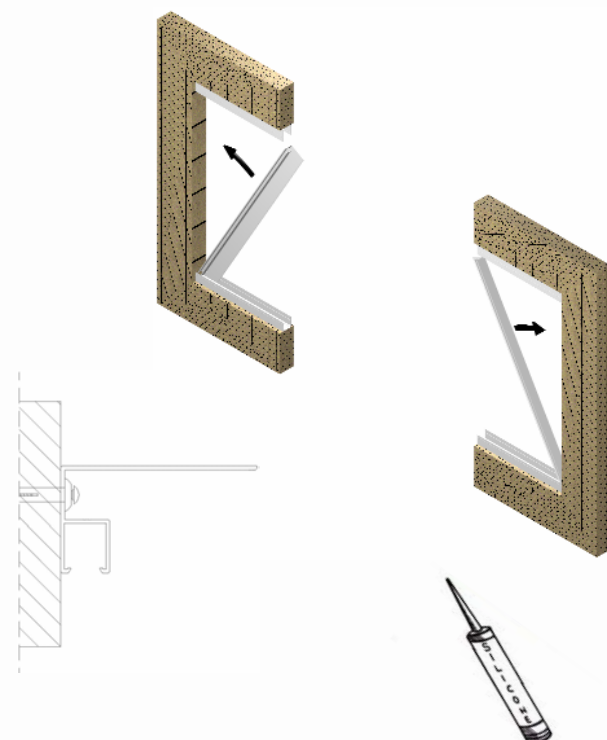
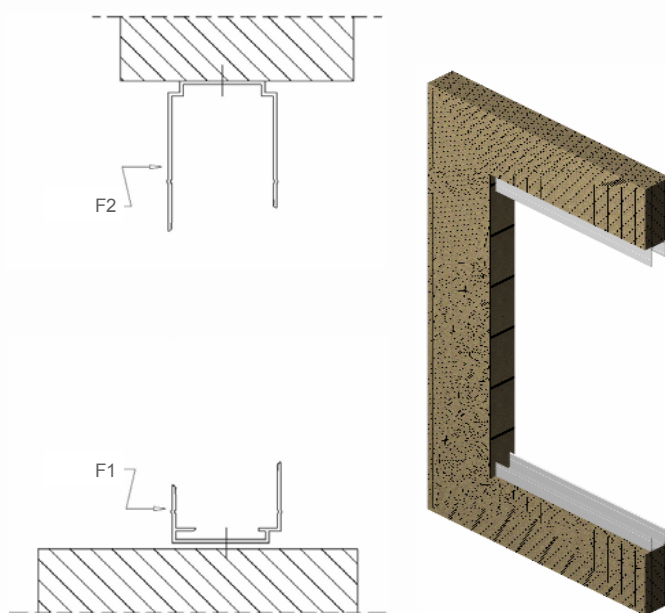
Note: Use a flashing where required underneath the F13 profile, alternatively the F6 lower profile incorporating a wall cover can be used instead of the F1 standard lower profile.

2) Locate the F43 side fix profiles - these should be cut 15-20mm shorter than the glazing aperture to enable them to slot within the F2 upper profile and F1 lower profiles.

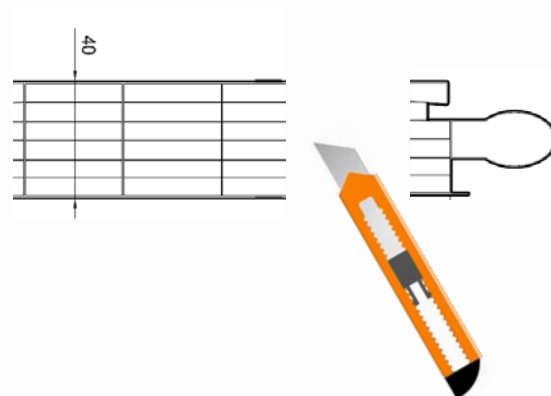
The F43 profiles can be screwed to the walls or supporting structure with suitable fixings placed every 500mm.

3) Seal all the joints between the framing profiles and the walls or supporting structure and around the fixings in the lower profiles if necessary. Also seal with silicone the internal corner joints and any butt joints between profiles.

Note: the use of thermal break packers/insulating gasket or isolating tape can be made during these steps - if required insert between the F2/F1/F43 profiles and the supporting structure.



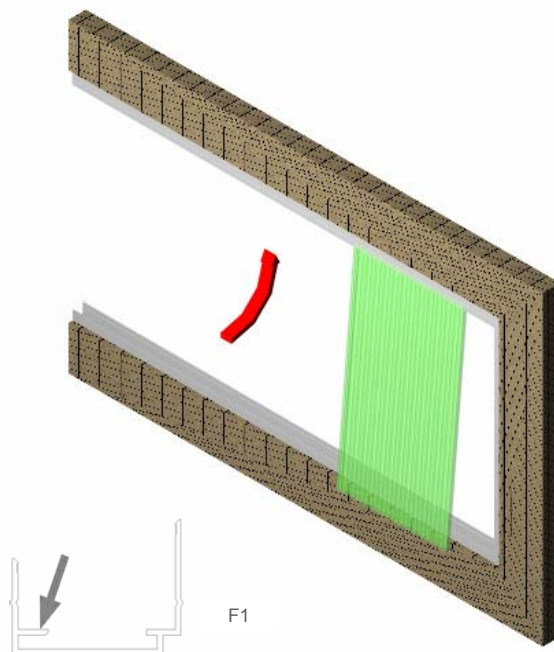
4) Cut the tongue off the first sheet to give a flat finish. Hand or power saws for metal or wood are suitable for cutting polycarbonate sheet.



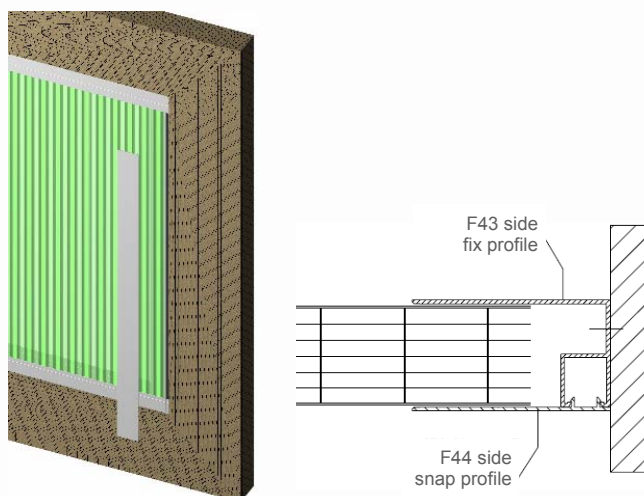
5) Sheets should be ordered or cut approx. 35mm shorter than the overall glazing aperture height to allow for fitting and sheet thermal expansion.

Insert the first sheet by pushing it up fully within the F2 upper profile and swing in the bottom of the sheet thus allowing it to clear the front lip of the F1 lower profile. Then let the sheet sit down within the F1 lower profile so that it rests on the inner lip.

Note: ensure the sheet is installed the correct way around with the UV protected surface on the outside (side supplied with protective film on).



6) Slide the first sheet into the F43 side profile then push fit the first F44 side snap profile. The F44 should be cut c.20mm shorter than the glazing aperture so that it fits within the F2 and F1 profiles, sitting flush on the glazing sheet.



Rockwell
GLAZING SOLUTIONS

Sales office:
Rockwell House, Birmingham Road,
Millisons Wood, Coventry CV5 9AZ
Fax: **01676 523630**
E-mail: info@rockwellsheet.com

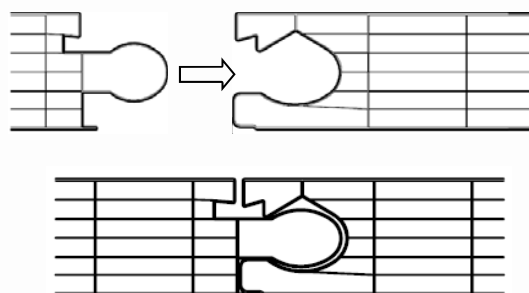
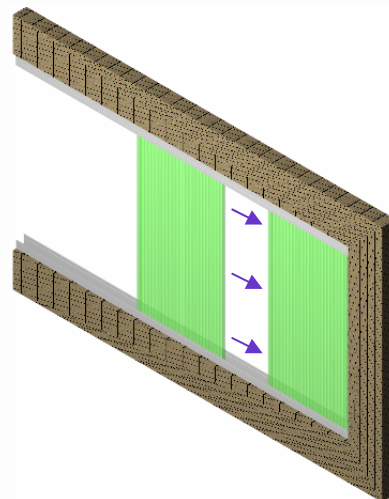
Telephone

01676 523386
www.rockwellsheet.com

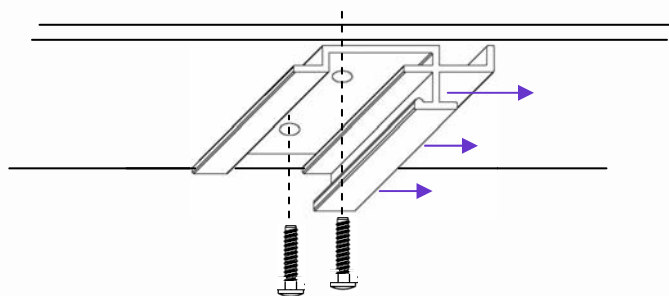
7) Fit the second sheet within the upper and lower profiles as described before.

Slide the second sheet along and apply force so the edge with the tongue locks within the grooved edge of the first sheet.

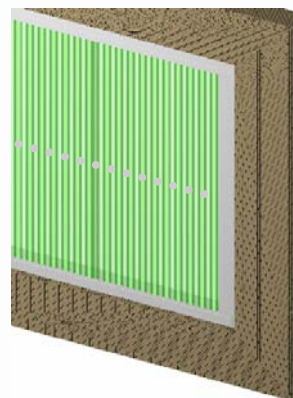
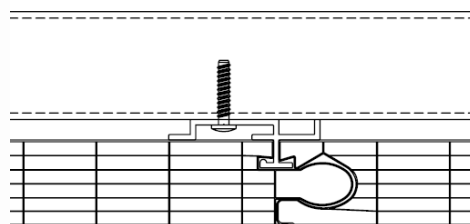
This may require the use of a rubber mallet and suitable buffer to spread the impact force. Start pushing at the top of the second sheet and work down.



Note: if the glazing is being installed on to horizontal cross supports then before clicking the Module 500 sheets together it is necessary to fit the hidden fastening clamps. On each cross support slide the clamps on to the inside lip of the first sheets' grooved side. Then secure the clamps to the cross supports using two suitable low profile fixings.



Then fit the second sheet in the manner explained above.



Rockwell
GLAZING SOLUTIONS

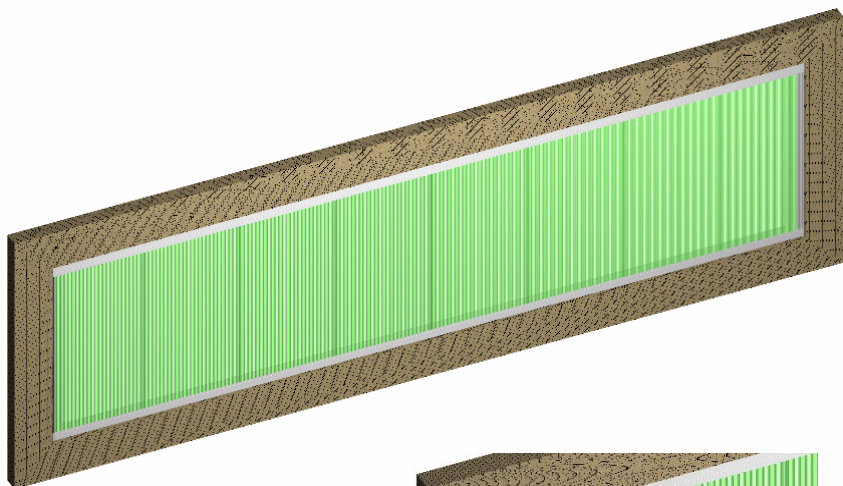
Sales office:
Rockwell House, Birmingham Road,
Millisons Wood, Coventry CV5 9AZ
Fax: **01676 523630**
E-mail: info@rockwellsheet.com

Telephone

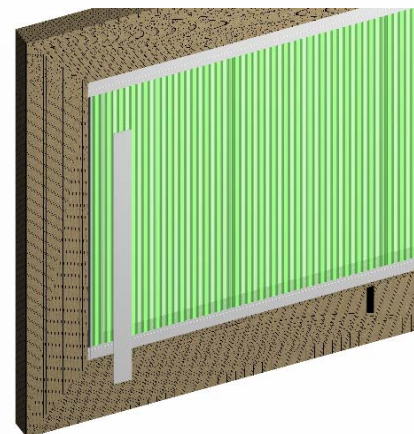
01676 523386
www.rockwellsheet.com

8) Proceed this way according to the instructions previously described until all the glazing panels are installed.

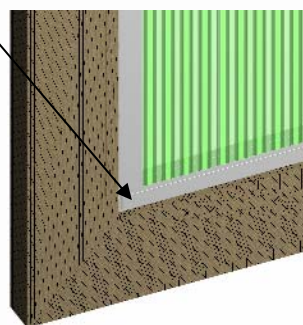
Note: the last sheet should be cut to the width required which is 30-40mm less than the distance from the side of the penultimate sheet to the edge of the glazing aperture.



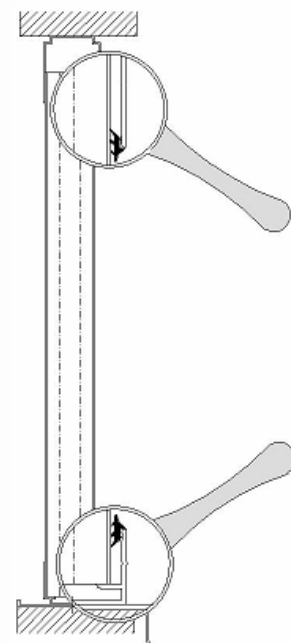
9) Fit the final F44 side snap profile in the same manner as the first one. For a secure fit it is also advised to rivet or screw through the face of the F2 upper profile and F1 lower profile where the F44 profiles intersect.



Also apply a bead of polycarbonate compatible silicone along this joint and up the edge of the F44 side profiles where they sit on the first and last sheets.



10) Finish the glazing by inserting the rubber gaskets in the upper and lower profiles, plus check and make good any butt joints between the framing profiles using a suitable sealant.



General Notes:

- When using standard upper and lower profiles use sheets approx. 35mm shorter than the overall glazing aperture height.
- Take care when forcing sheet together so as not to damage the interlocking edges.
- If cutting sheets to length remove swarf and re-seal sheets with suitable adhesive foil or micro perforated foil tape.

The above instructions are intended for standard applications, please contact Rockwell's Technical Department for any queries relating to the installation of Module 500 glazing.



Rockwell
GLAZING SOLUTIONS

Sales office:

Rockwell House, Birmingham Road,
Millisons Wood, Coventry CV5 9AZ

Fax: **01676 523630**

E-mail: info@rockwellsheet.com

Telephone

01676 523386

www.rockwellsheet.com

ACCESSORIES AVAILABLE FOR MODULE 500 GLAZING SYSTEM

Top Hung Windows



Louvre Windows



Thermally Broken Upper, Lower, Sill & Side Profiles



Rockwell
GLAZING SOLUTIONS

Sales office:
Rockwell House, Birmingham Road,
Millisons Wood, Coventry CV5 9AZ
Fax: **01676 523630**
E-mail: info@rockwellsheet.com

Telephone

01676 523386
www.rockwellsheet.com